

SqWhere

ONE PLACE.
DIFFERENT PERSONALITIES.

Three individuals
Different personalities
All come together at one place

Where they can have...
...the freedom to roam
...the freedom to soar in their careers
...the freedom to mingle with friends
...the freedom to have their quiet spaces
...the freedom to work out or wind down
...the freedom to make it on their own

These are their stories
...at **SqWhere**

RETAIL OFFICE

11.30am

It's Dad's birthday today!
Next manicure appointment is at 1pm.
Glad I'm the boss! My staff can cover for me.
I'll go out and buy Dad a present.

11.40am

So glad the MRT station is just a bridge away.
The Curve, just a few stops away.
Run to the furniture shop.
Buy the reclining armchair.
I can just see Dad relaxing while watching Wah Lai Toi.
Sweet-talk the staff into delivering it by 6pm.
Can't wait to see Dad's face when he gets it!

5.00pm

Done with last appointment for the day.
I lock up.
Did I remember to turn off the air conditioning?
Pass by the bakery.
I'll get some chocolate cake. Dad's favourite.
On the MRT again. It has become so familiar.
I sit down and close my eyes.
Me time, 15 precious minutes.
Memories of dad and I flying paper planes flood back.
I smile.





SOVO

9.15pm

*Another late night.
Another coffee. Another cigarette.
Better pop down and grab a bite.*

9.45pm

*Bump into Paul - my buddy from college!
We can't stop talking.
I know the perfect place to go!
Work can wait.
We buy a few drinks from the store.
We stroll through the Secret Passage.
We go down memory lane.
Remembering the big dreams we shared.
At the Pavilion, we laugh out loud.*

11.45pm

*Back at the SOVO.
Recharged and inspired.
I smile.*





SERVICE APARTMENT

12.30pm

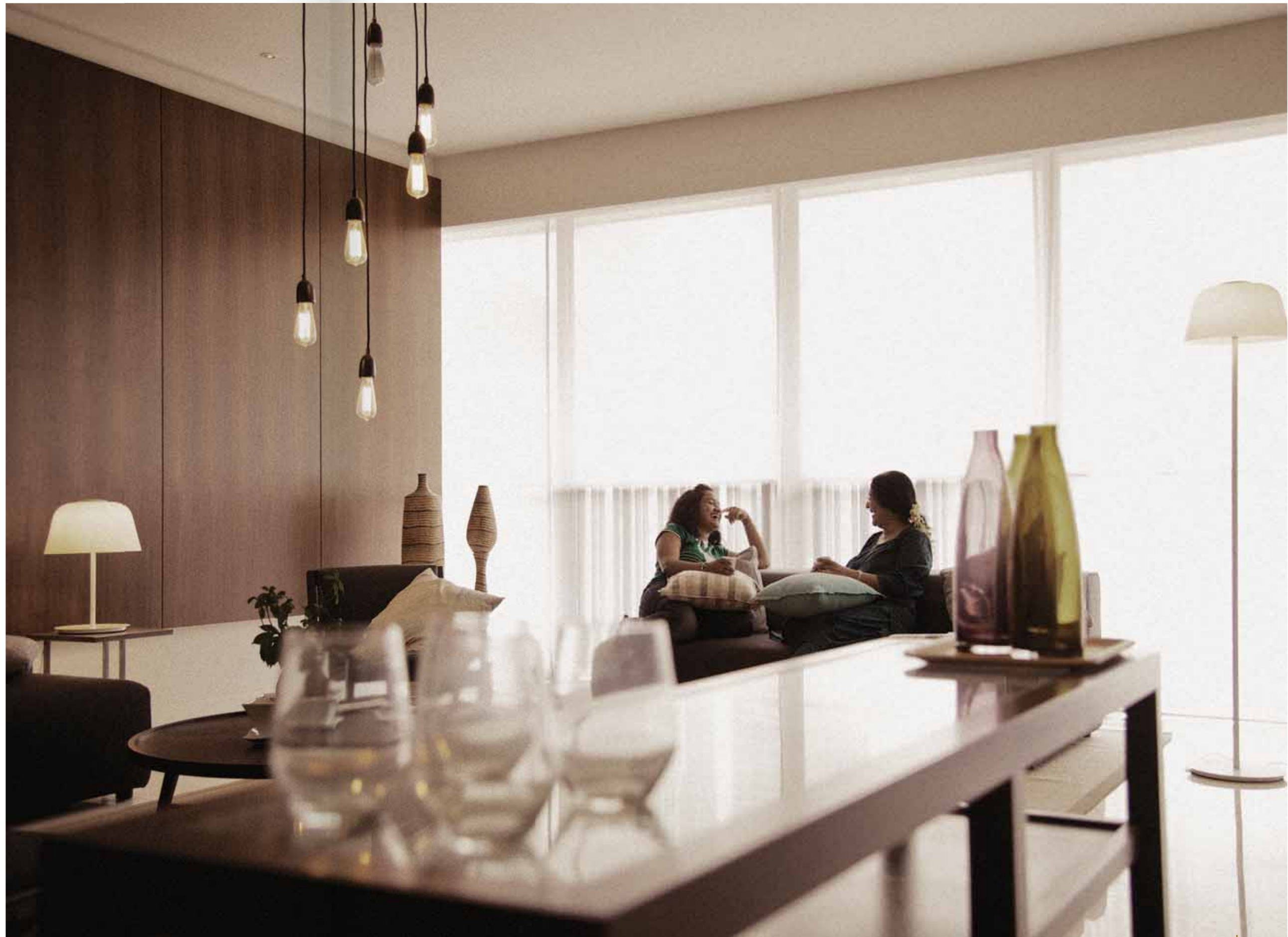
*Our baby is home.
Our 24-year-old baby.
Knew she won't be able to stay away from my cooking.
She brings back her dirty clothes. What's new?*

1.05pm

*"How's your new place, sweetie?"
She gulps down the last of her soup.
"It's great Ma. I can't thank you enough!"
She wanted to leave the nest.
We wanted to keep her close.
We found the perfect place.
Safety. Convenience. Amenities.
And independence for her.*

3.12pm

*She lugs back the laundry she dropped off last week.
She says she'll buy us dinner at her place soon.
"Lots of nice eateries there Ma."
I hand her "tapao" soup in a Tupperware.
A quick hug. A quick kiss.
I smile.*





INTRODUCING A PLACE OF LIBERATING EXPERIENCES.

Welcome to a vibrant development consisting of Retail Offices, SOVOs and Service Apartments, with artistic yet calming landscapes on different levels to provide you a series of life experiences.

Directly linked to Kampung Baru Sungai Buloh MRT Station, with easy access to MRR2, NKVE, LDP, SPRINT and Guthrie Corridor, you are just minutes away from healthcare and education institutions.

Here, you have...

...the freedom to roam

within the Garden SqWhere & Secret Passage

...the freedom to soar in your career

within the conducive work environment of the SOVO

...the freedom to mingle with friends

over a nice drink or a fine meal at the Retail SqWhere

...the freedom to have your quiet space

under one of the pavilions at the Garden Lounge

...the freedom to work out or wind down

at the floating gym overlooking the tree canopy

...the freedom to make it on your own

Create your own story

...at **SqWhere**

OVERALL DEVELOPMENT

A vibrant development with direct link to
Kampung Baru Sungai Buloh MRT Station

- Retail Offices
- SOVOs
- Service Apartments



LANDSCAPE

In Perfect Harmony

1 Retail SqWhere...

Lush plants, sheltered avenues, beautiful sculptures set in an open lawn, with a cascading water feature – a great place for you to catch up with friends, shop and dine.

2 Garden SqWhere...

Expansive greenery with trees, surrounded by lap pool, hydrotherapy pool, children’s pool and play area – perfect for a family day or picnic.

3 Garden Lounge...

Pavilions in secluded corners within the greenery – for you to get inspired, or to spend quality time with family and friends.

4 Secret Passage...

Beautifully landscaped passage with plants and pebbles – stretch, walk & relax.

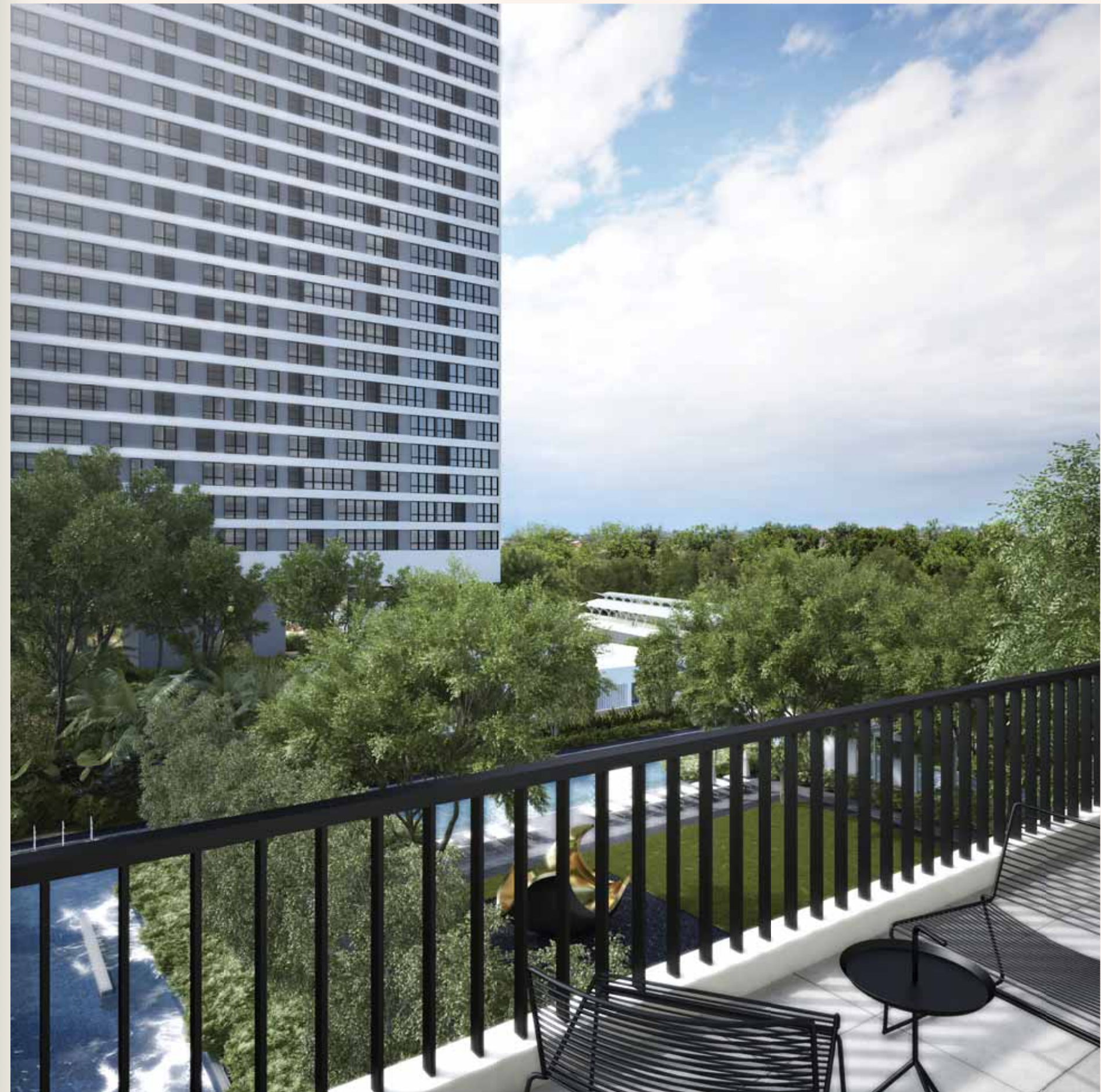
■ Level 1 ■ Level 8

**except for Retail SqWhere, all other items are exclusive to SOVOs and Service Apartments*



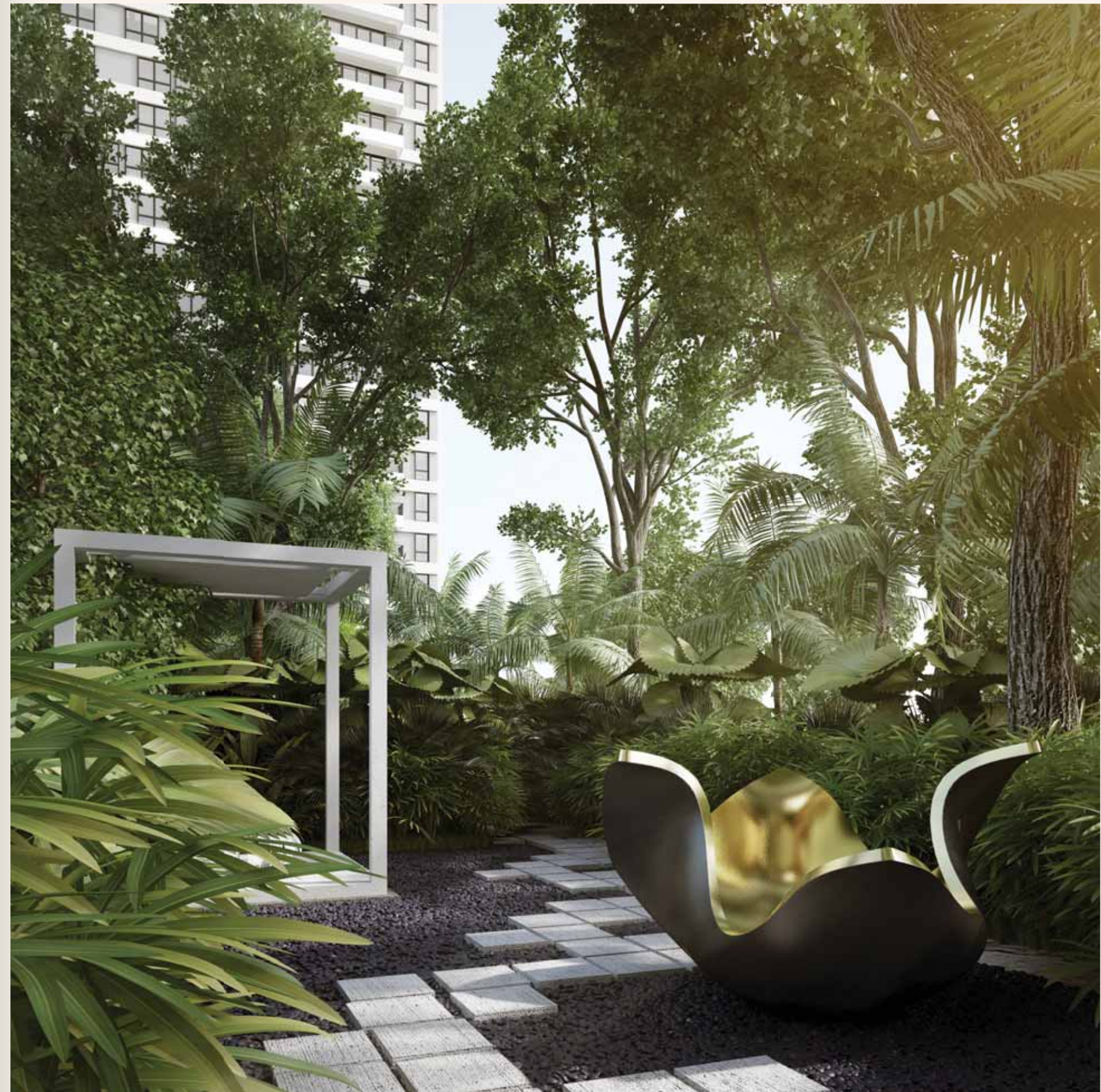
LANDSCAPE

View of SOVO Tower from
Service Apartment



LANDSCAPE

Secret Passage



LANDSCAPE

Growing businesses
with a touch of art



FACILITIES

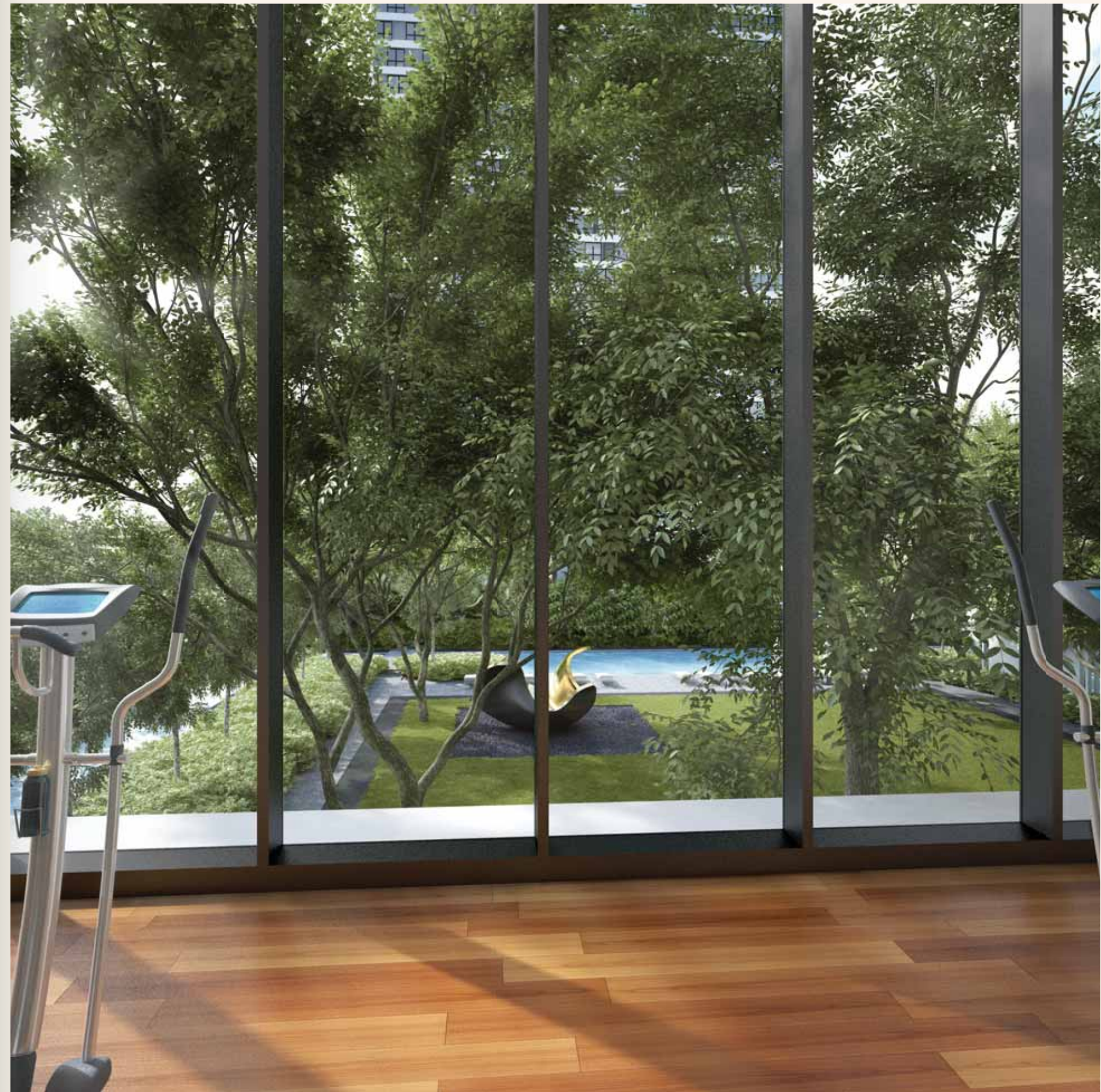
- 1 Lap Pool
- 2 Hydrotherapy Pool
- 3 Floating Gym
- 4 Children's Pool
- 5 Children's Water Play Area / Children's Play Area

**exclusively for SOVOs and Service Apartments*



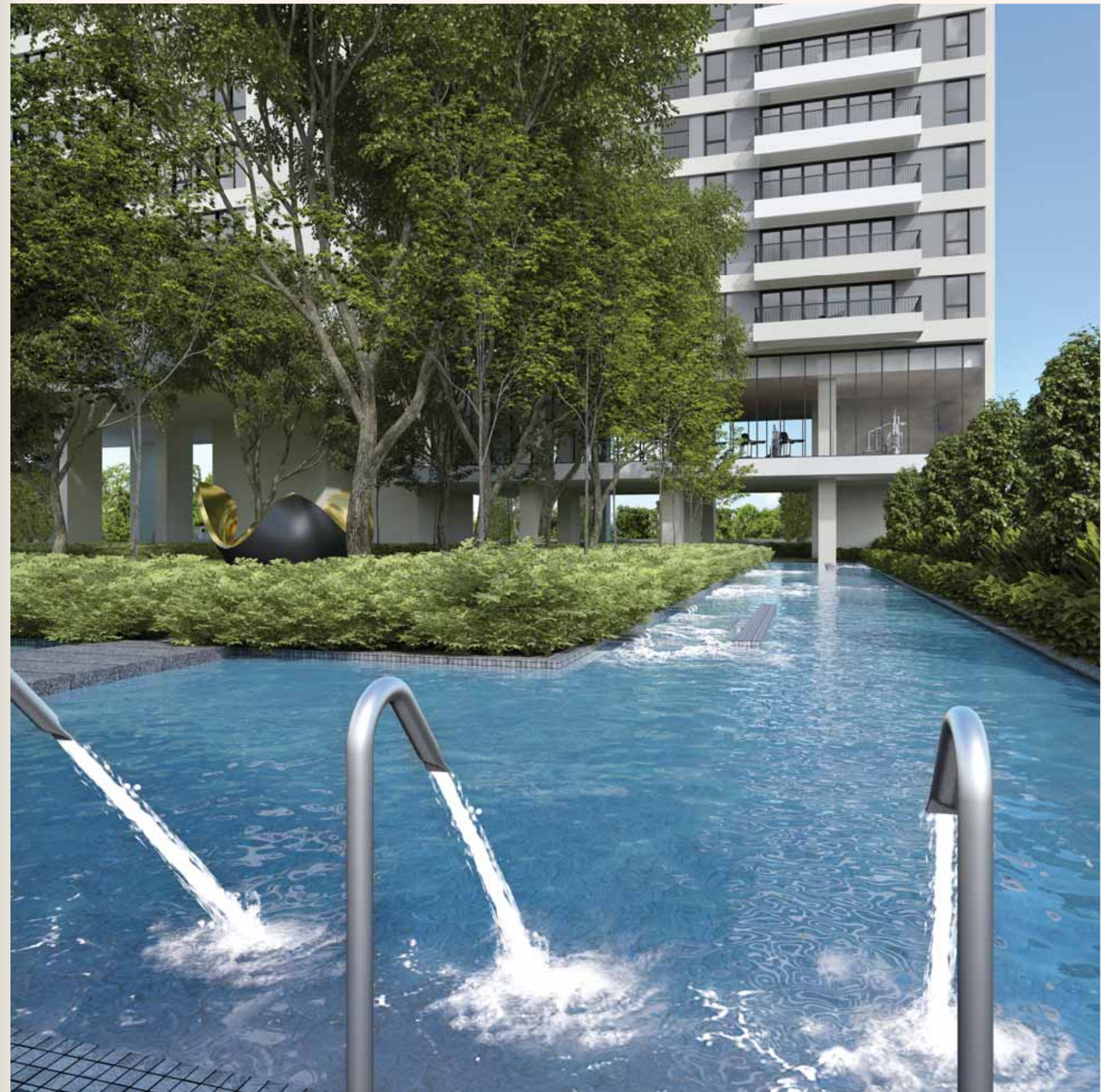
FACILITIES

Floating gym
overlooking tree canopy



FACILITIES

Hydrotherapy pool with a variety of water-based massages and therapy jets



We bring you closer

SqWhere is directly linked to Kampung Baru Sungai Buloh MRT Station, with easy accessibility to major highways, namely NKVE, LDP, MRR2, SPRINT and Guthrie Corridor. Neighbouring this development are some of the best colleges and international schools such as SEGI College, Masterskill College, elc International School and Sri KDU International School, while several commercial hubs are situated around 15 minutes away.



Another extraordinary living experience from SDB



The Hub@SS2, Petaling Jaya



Dedaun, Kuala Lumpur



By The Sea, Penang

Incorporated in 1962, Selangor Dredging Berhad (SDB) was, until the 1980's principally involved in tin mining. Today, SDB is positioned as a quality lifestyle company focused on property-related activities. Listed in Bursa Malaysia, SDB owns Wisma Selangor Dredging – a prestigious business address, and Hotel Maya Kuala Lumpur – an award-winning boutique urban resort. Both are within a short walking distance to the iconic Kuala Lumpur City Centre (KLCC).

Today, SDB is a brand that is recognised for its niche luxury developments and innovative designs. SDB has consistently been recognised for its innovation and its excellence by numerous professional bodies such as Singapore Institute of Architects (SIA), Pertubuhan Arkitek Malaysia (PAM), and International Real Estate Federation (FIABCI) for setting new benchmarks in the industry.

SDB is committed to its brand promise of “Driving Excellence, Building Lifelong Relationships”.



Windows on the Park, Cheras

SDB's projects in Malaysia:

- Windows on the Park**
8.9 acres of parkland surrounding 540 units of condominiums ranging from 916 sq ft – 4,311 sq ft, all with beautiful views
- The Hub@SS2**
Gardens, rooftop swimming pool, fully-equipped gym, open-air promenade – they all add up to a great place to think, work and connect
- Laman & Bayu**
A guarded community comprising 72 units of 2-storey and 2½-storey semi-Ds with excellent connectivity located in Puchong South
- By The Sea**
138 beachfront luxury suites with panoramic views located on Batu Ferringhi, Penang, designed for the global executives

- Dedaun**
A 38-unit luxury apartment nestled in a secluded corner of Kuala Lumpur City Centre
- 20trees**
A 201-unit mixed development overlooking the world's longest quartz ridge, just 15km from Kuala Lumpur City Centre
- 20trees West**
An exclusive collection of 48 bungalows with private pools sited adjacent to 20trees
- Five Stones**
A collection of 377 units of low and high-rise condominiums with extensive facilities located in Petaling Jaya
- Park Seven**
A 105-unit luxury condominium at Persiaran KLCC, 700m from the iconic Petronas Twin Towers

SDB's projects in Singapore:

- Village at Pasir Panjang**
Most of the 148-unit apartments open up to a 7,000 sq ft three-dimensional lawn
- Hijauan On Cavenagh**
41 handcrafted low-rise luxury apartments in a coveted green lung, located off Orchard Road
- OKIO**
An 18-storey stylish contemporary residential and commercial development located on Balestier Road
- Gilstead Two**
A 34-storey luxury development in the prime Newton locale
- Jia@65 Wilkie**
An exclusive 7-storey development with only 22 units located just off Orchard Road

- The FIABCI Prix D'Excellence Award 2013 & 2010
- The FIABCI Malaysia Property Award 2012 & 2009
- The International Star for Leadership in Quality Award 2012
- The Asia Responsible Entrepreneurship Award (AREA), South-East Asia 2012
- The Asia Pacific International Property Award 2012, 2011 & 2010
- The Asia Pacific Entrepreneurship Award (APEA), Malaysia 2012
- The Brand Laureate Award 2011-2012 for “Corporate Branding-Best Brands In Real Estate & Property”
- South-East Asia Property Awards 2011



Ground Floor, South Block
Wisma Selangor Dredging
142A Jalan Ampang, 50450 Kuala Lumpur
T 603 2711 2288 / F 603 2711 2219

SDB Gallery

+603 6158 0808 / +603 6158 0880

www.sdb.com.my  [/selangordredgingberhad](https://www.facebook.com/selangordredgingberhad)

All information contained herein including visuals, illustrations, specifications, furniture and fittings layout and the presentation of show units are subject to change as may be required by the Developer's consultants and/or relevant authorities and cannot form part of an offer or contract for the sale and purchase of any unit. While every reasonable care has been taken in providing this information, the developer or its agent cannot be held responsible for any inaccuracies. Illustrations and pictures in the printed materials are computer-generated artists' impressions only and are meant to give an approximate idea of the development. All items or plans are subject to variation, modifications, amendments and substitution as may be recommended by the Developer's consultants and/or relevant authorities.

