

AMVERTON



03-5122 8889

Amverton Sales Gallery:

Jalan Sungai Kelubi 32/112,

Seksyen 32, 40460 Shah Alam,

Selangor Darul Ehsan, Malaysia.

www.amverton.com

 Amverton Sales Gallery

 Amverton Greens



AMVERTON GREENS

@ Bukit Kemuning Golf & Country Resort

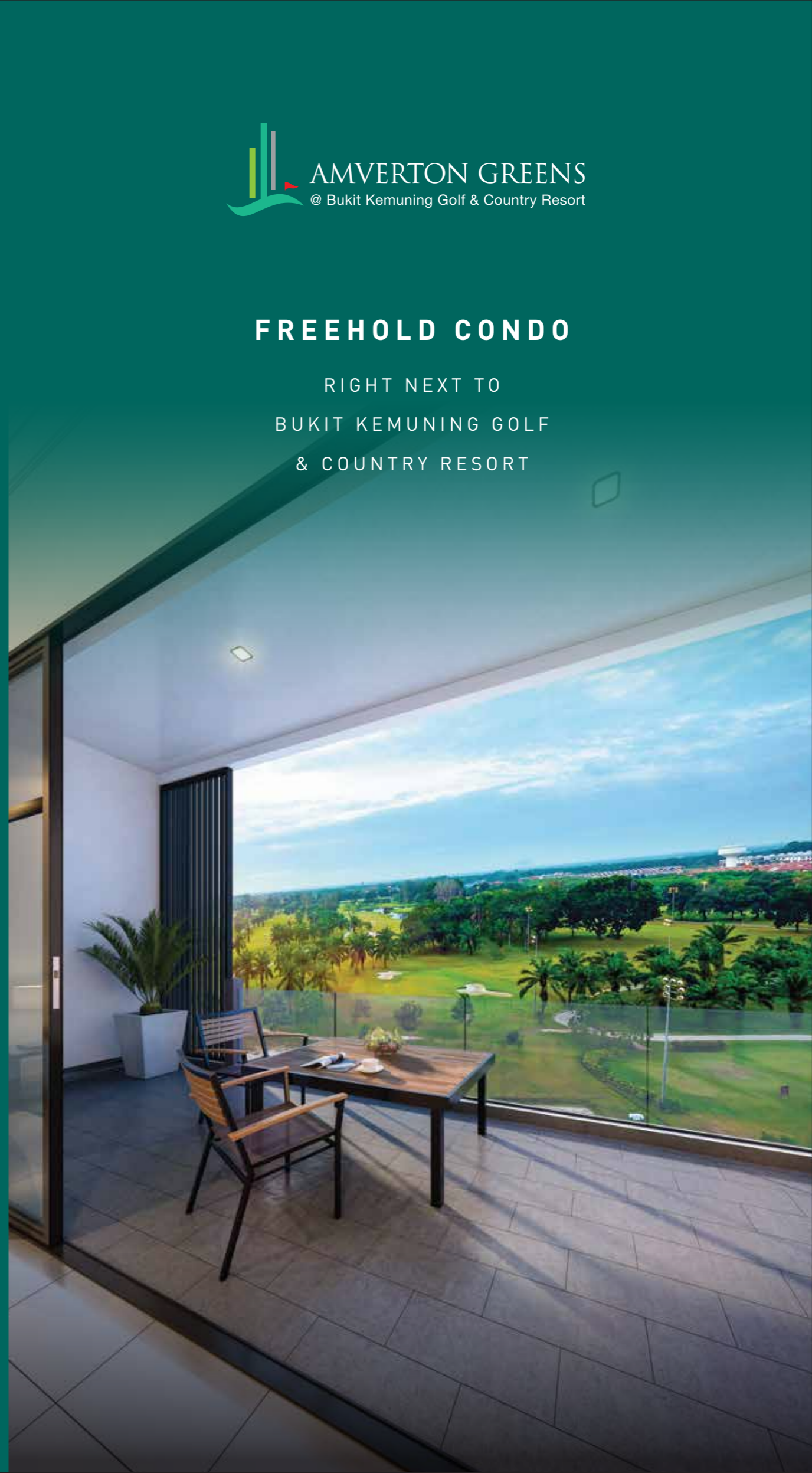
FREEHOLD CONDO

RIGHT NEXT TO
BUKIT KEMUNING GOLF
& COUNTRY RESORT

Developer: Amverton Prop Sdn Bhd (Tempatan No: 198401005294) Formerly known as AMI Construction Sdn Bhd (117812-W)
Developer Licence No: 6629-9/04-2021/02083(U) Validity Period: 15/04/2020 – 14/04/2021
Advertising Permit No: 6629-9/04-2021/02083(P) Validity Period: 15/04/2020 – 14/04/2021

• Land Tenure: Freehold Encumbrances: Nil Approving Authority: Majlis Bandaraya Shah Alam (MBSA) Building Plan Reference No: MBSA/BGN/BB-600-1(P)/SK/32/0102-2016 Minimum Price: RM497,888 Maximum Price: RM945,888 Total Units: Tower A: 88 units (Type A - 22 units, Type B - 20 units, Type B1 - 2 units, Type C - 31 units, Type C1 - 2 units, Type D - 11 units) Tower B: 104 units (Type A - 26 units, Type B - 24 units, Type B1 - 2 units, Type D - 26 units, Type E - 26 units) Tower C: 88 units (Type A - 22 units, Type B - 20 units, Type B1 - 2 units, Type C - 31 units, Type C1 - 2 units, Type D - 11 units) Expected date of completion: May 2021

This brochure, plans and any marketing material does not form part of any contract and is not to be treated as an offer. It serves as an information only and disclosed to the prospective purchasers without responsibility to the Developer and are not intended to be relied on. All renderings are an artist's impression only. The designs, size and layout are indicative only and may be subject to change. Any areas, measurements or distances shown in any text or plan are approximate only and subject to variations, modifications and substitutions as may be required by the relevant authorities or the Developer. The Developer reserves the right to make changes in the interest of improving the overall scheme. While reasonable care has been taken in preparing this brochure, plans and any marketing information, the Developer cannot be held responsible for any variations or inaccuracies. Any buyer must satisfy himself by inspection or otherwise as to the accuracy of any information given. All sales remain subject to contract.



KEY FEATURES

- ✓ FREEHOLD
- ✓ Low density of 280 units only
- ✓ The only exclusive low-rise condo in the vicinity
- ✓ Beside renowned Bukit Kemuning Golf & Country Resort
- ✓ Spacious units with a variety of built-ups
- ✓ Minimum 3 rooms for each unit
- ✓ Multi-tier security with 24-hr CCTV surveillance
- ✓ Recreation podium with Clubhouse facilities
- ✓ Minimum 2 car park bays for every unit
- ✓ Matured and established neighbourhood – Kota Kemuning, Bukit Rimau & Kemuning Utama
- ✓ Nearby vital amenities and conveniences
- ✓ Well connected to major highways



ULTRA MODERN AND OPULENT
DROP-OFF AREA THAT WILL ASTOUND
YOUR FRIENDS AND GUESTS. BE A
PROUD OWNER OF AMVERTON GREENS!



SPACIOUS UNITS WITH A GREAT
CHOICE OF BUILT-UPS TO SUIT EVEN
THE MOST DEMANDING. LIVE ABOVE
THE REST AND REVEL IN NATURAL
LIGHT, BREEZY FRESH AIR AND OF
COURSE THE PRICELESS GOLF CLUB
VIEWS RIGHT FROM YOUR BALCONY!



- A variety of built-ups from 953sf to 1,528sf
- Practical layouts
- Minimum 3 rooms + 2 baths
- High ceilings
- Only 8 units per floor





A RESORT AMBIENCE TO
FULFIL WIDE-RANGING
RECREATION INTERESTS

MASTER SITE PLAN



LIFESTYLE FACILITIES

Amverton Greens offers a haven of facilities to its residents. The recreation podium on level 4 is where the soul rejuvenates and the mind is at ease.

CLUBHOUSE FACILITIES

- Café
- Multi-purpose hall
- Gymnasium
- Sauna
- Changing rooms
- Reading room
- Games room
- Mini theatre
- Surau
- Management office



PODIUM LEVEL FACILITIES

REFRESH

- 25m lap pool with infinity pool effect
- Wet deck
- Spa pool
- Beach deck
- Kid's water play pool
- Mini lazy river
- Wading pool
- Outdoor shower
- Sun deck
- Pool deck
- Floating bridge (stepping stone)

RELAX

- Tertier garden
- Open lawn
- Maze garden
- Orchard garden
- Gazebo
- BBQ pits
- Picnic area
- Chess garden
- Children's playground
- Trellis garden
- Lounge area

REVITALISE

- Meditation deck
- Reflexology path
- Herbs garden
- Floating path

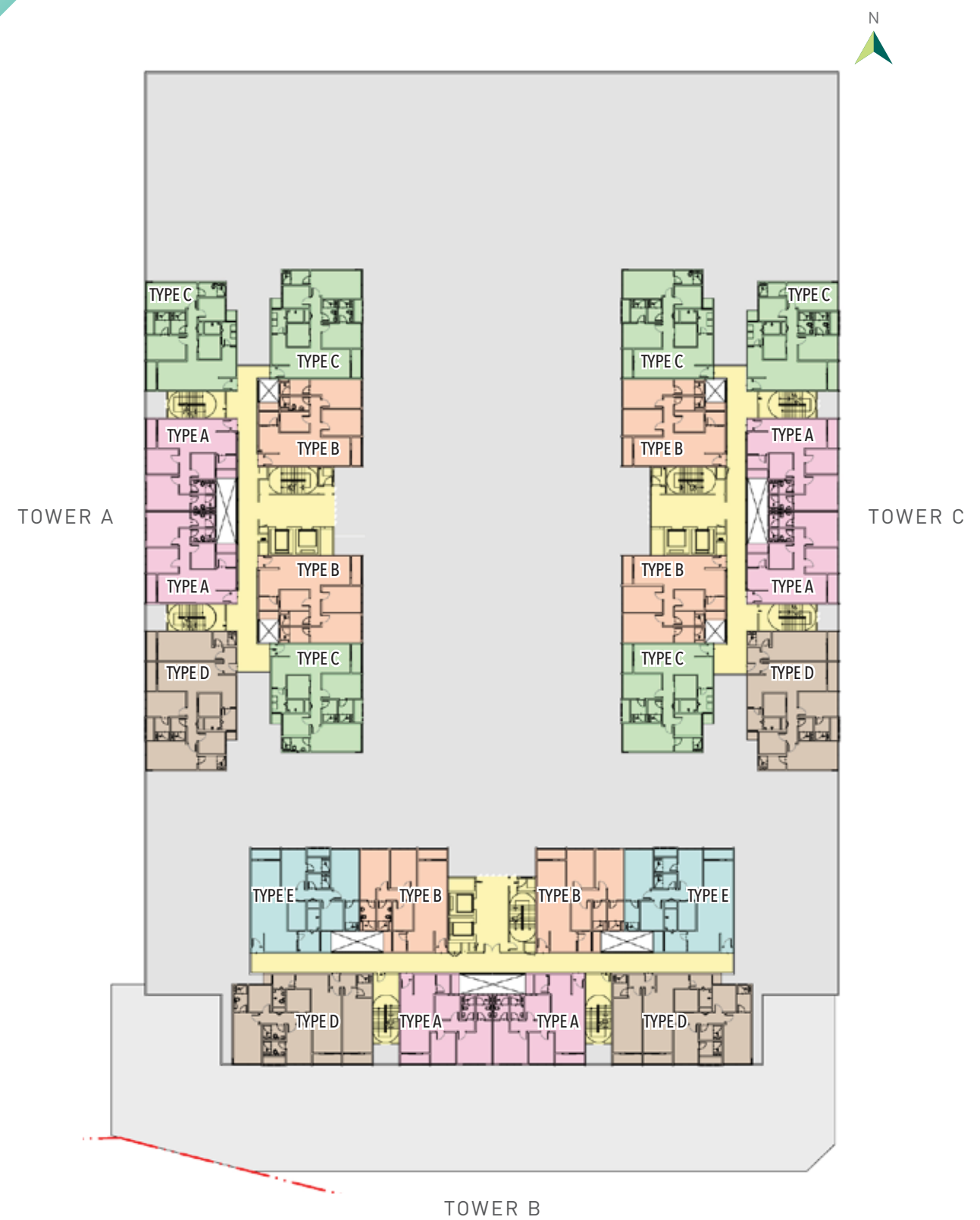




FLOOR PLANS

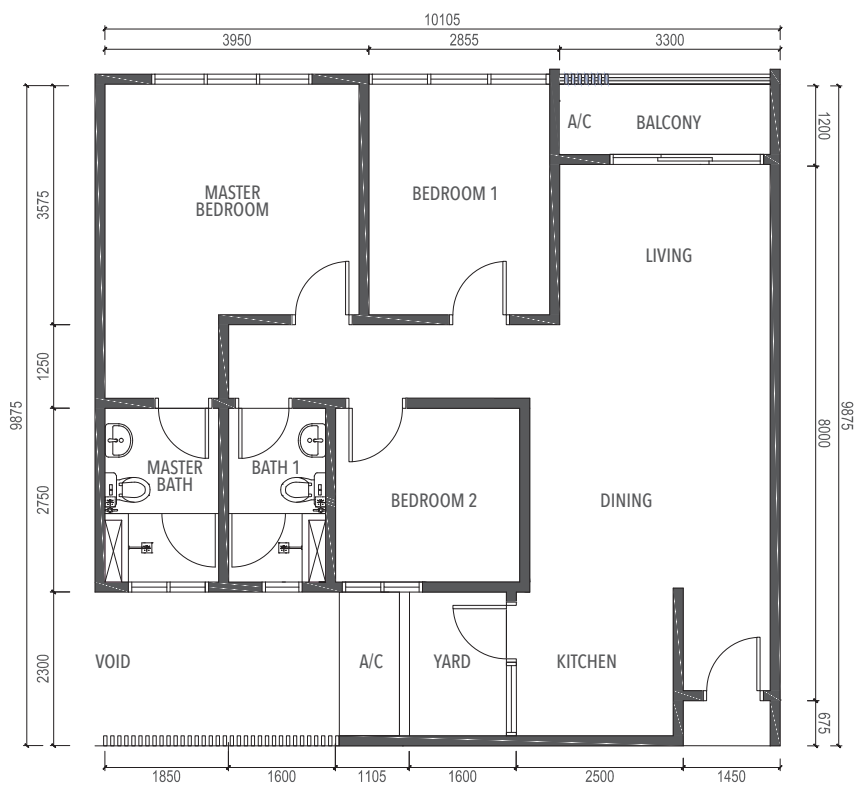
SPECIFICATIONS

TYPICAL FLOOR LAYOUT PLAN



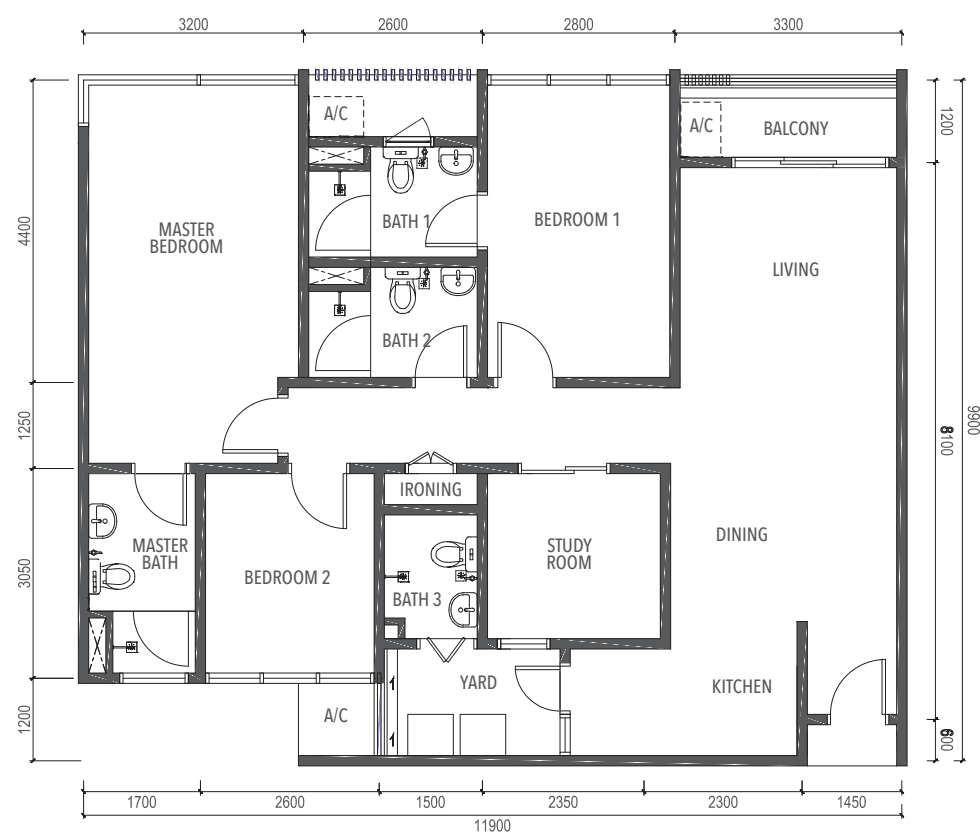
TYPE A

- 3-BEDROOM 2-BATH
- 953 sq.ft



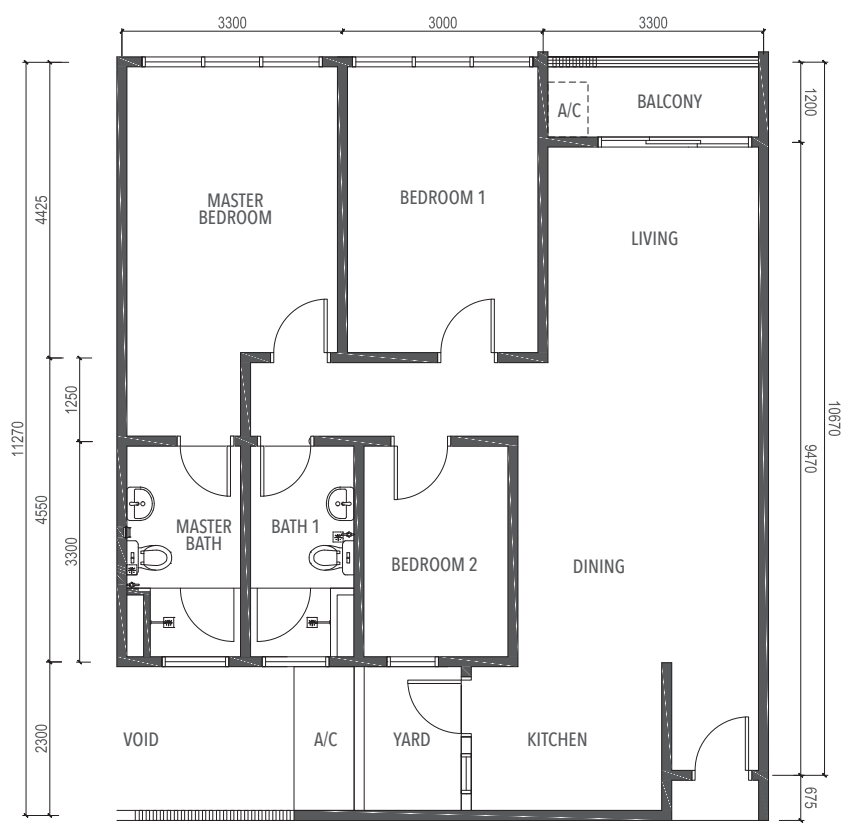
TYPE C

- 3-BEDROOM + 1 STUDY ROOM
- 4-BATH 1180 sq.ft



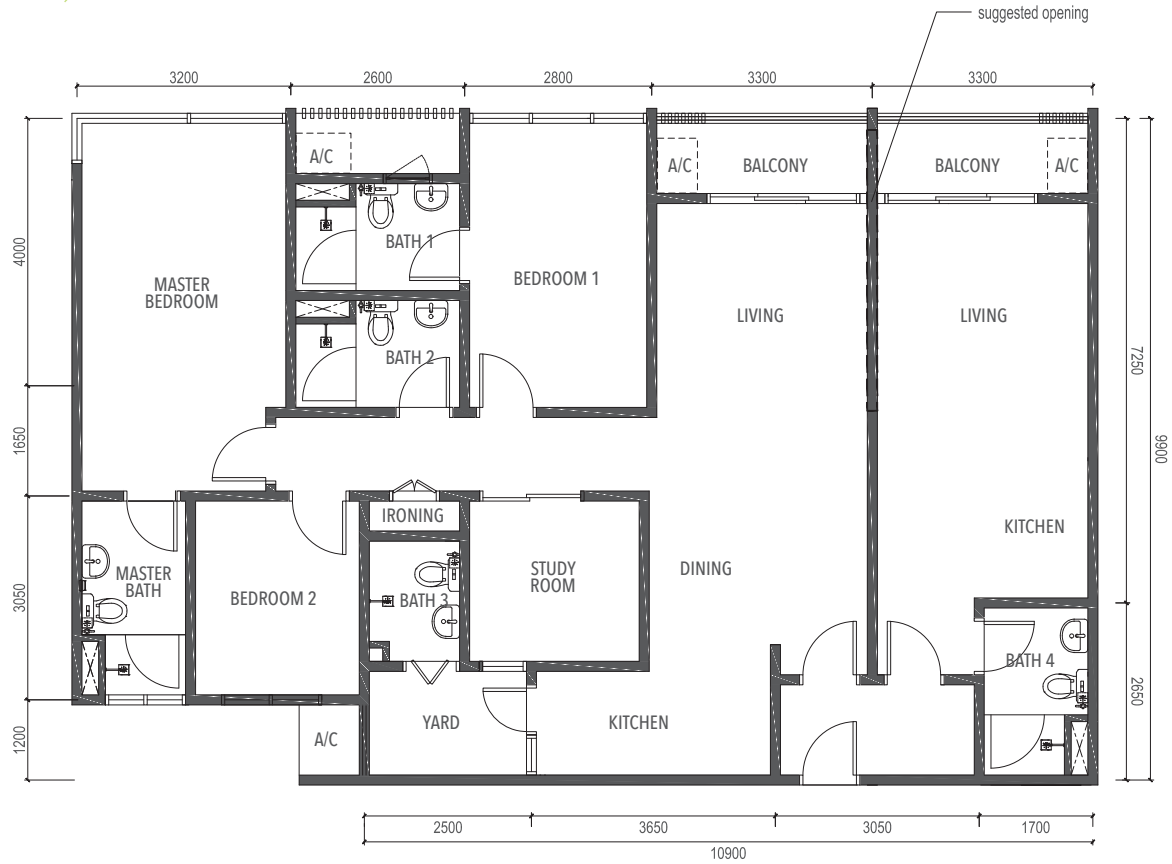
TYPE B

- 3-BEDROOM 2-BATH
- 1068 sq.ft



TYPE D (Dual Keys)

- 4-BEDROOM + 1 STUDY ROOM
- 5-BATH 1528 sq.ft



STRATEGIC LOCATION

CONNECTED TO MAJOR HIGHWAYS

- Lebuhraya Kemuning Shah Alam (LKSA)
- Lebuhraya Shah Alam (KESAS)
- Lebuhraya Damansara-Puchong (LDP)
- New Pantai Expressway (NPE)
- New Klang Valley Expressway (NKVE)
- South Klang Valley Expressway (SKVE)
- Federal Highway
- Guthrie Corridor Expressway
- West Coast Expressway (under construction)



—●— LRT 3 Route

- Exit at 505, Bukit Rimau Interchange along Kesas Highway
- Amverton Sales Gallery
- Amverton Greens



NEARBY CONVENIENCES & AMENITIES

- Bukit Kemuning Golf & Country Resort
- Kota Permai Golf & Country Club
- Columbia Asia Hospital
- Chinese Taipei School
- Chung Hua Chinese School
- Commercial centres
- F&B outlets
- Grocers, banks and etc





Amverton Park



Amverton Cove



Amverton Hills



Amverton Heritage

Amverton Greens is our latest condominium development from Amverton Berhad.

Other previous and on-going Amverton developments in the Klang Valley include Amverton Park in Shah Alam, Amverton Hills in Sg. Buloh, Amverton Cove Golf & Island Resort in Carey Island and Amverton Heritage Resort in Malacca.

