


MIDWOOD

WHERE INSPIRATION MEETS TRANQUILITY

A close-up photograph of several large, vibrant green leaves, likely from a plant like a peace lily. The leaves are layered and curve across the frame, creating a sense of depth and texture. The lighting is soft, highlighting the smooth surface of the leaves against a dark, almost black background.

“green is the prime colour
of the world, and that
from which its loveliness arises.”

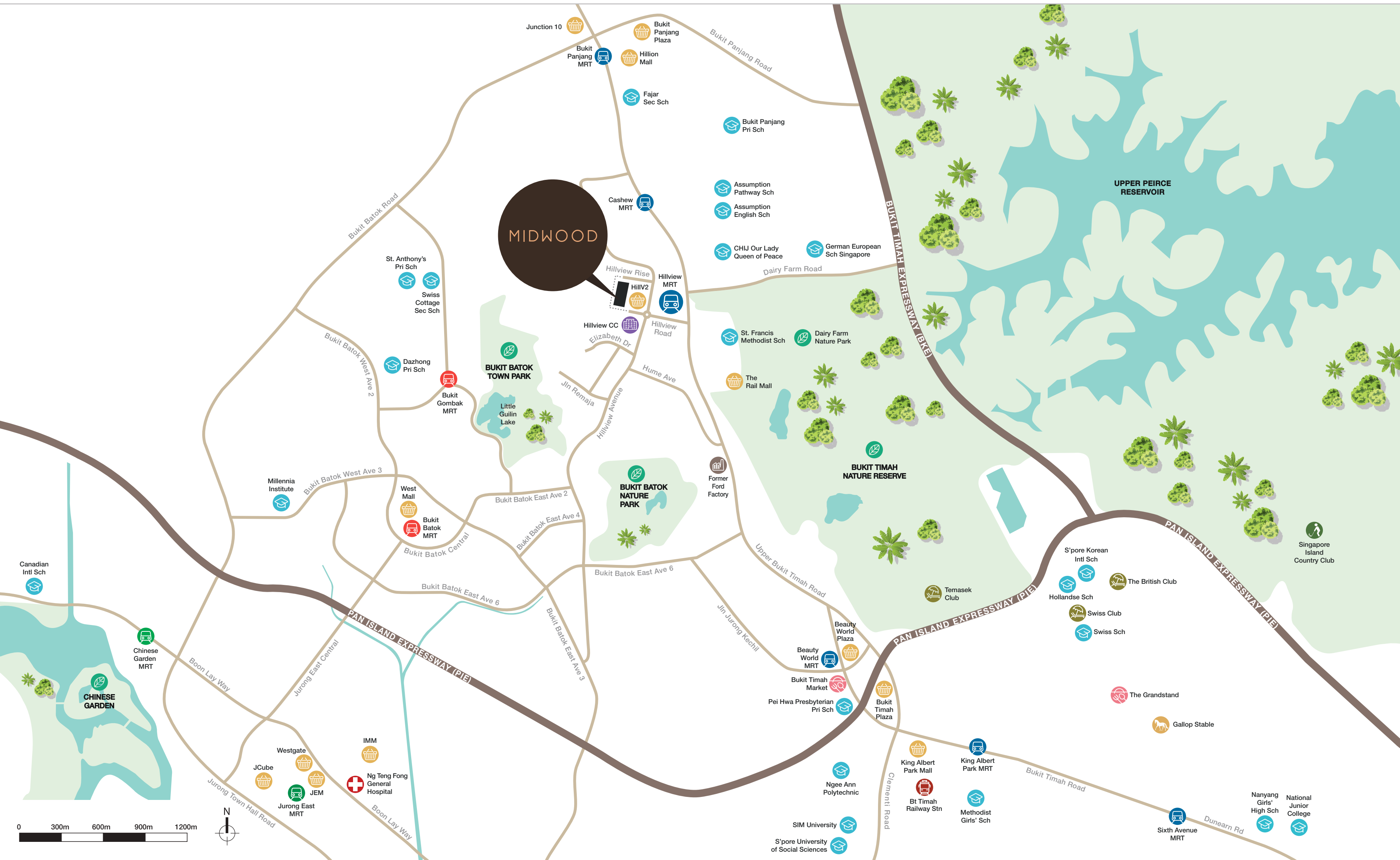
~ pedro calderon de la barca
renowned spanish playwright

where inspiration meets tranquility

Let calmness and serenity envelop you at Midwood, in the midst of a vast sea of green that will gently screen you from the cares of the world. The colours of nature, the parks and the quarries that the district is renowned for are echoed in the granite-inspired exteriors.

Whether you're marveling at the towers from the outside or enjoying pool vistas from within, its intricate facade adds intrigue to your viewing experience – accented by the verdant foliage of planters cleverly located all around.





MIDWOOD

UPPER PEIRCE RESERVOIR

BUKIT BATOK TOWN PARK

BUKIT BATOK NATURE PARK

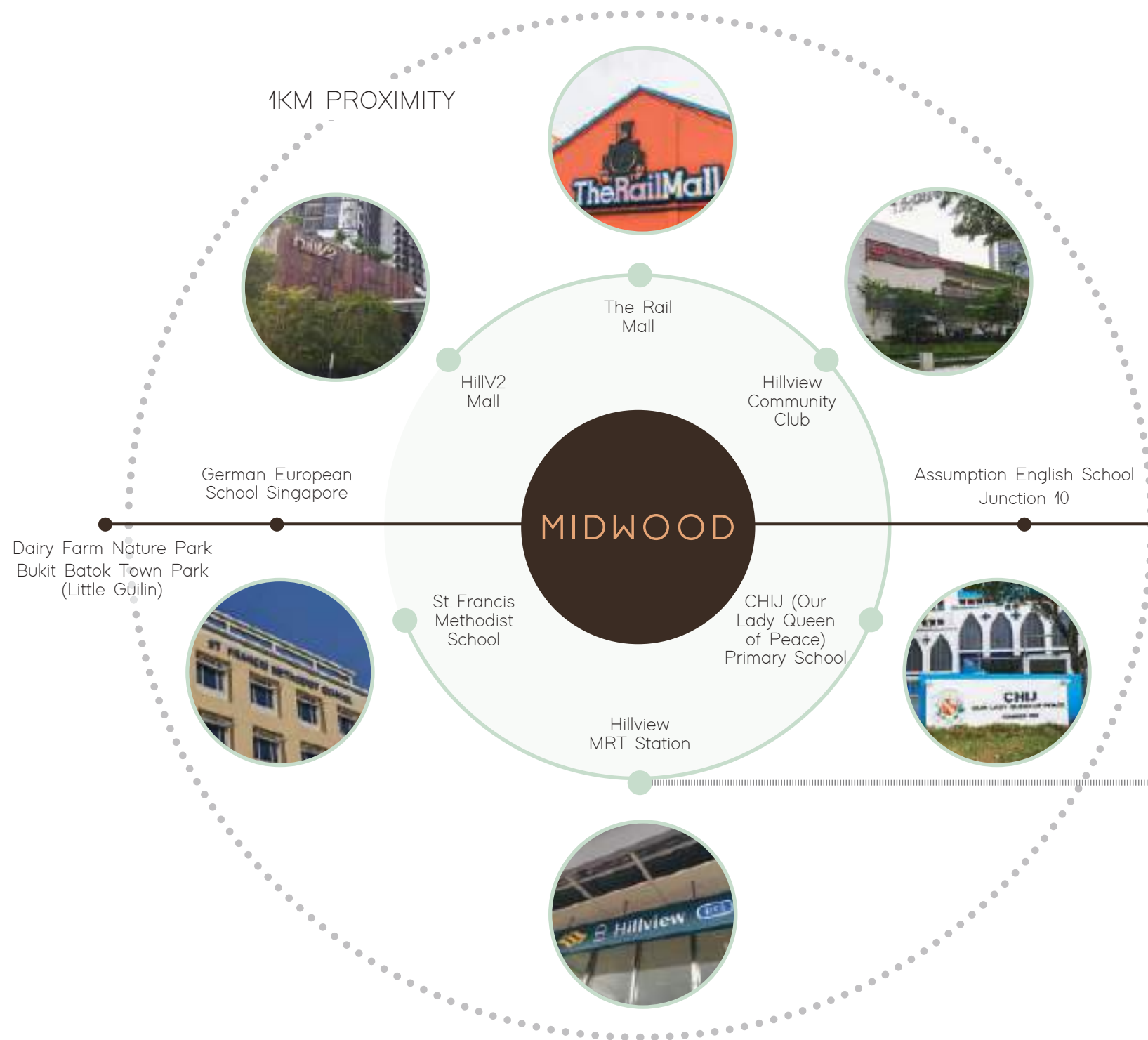
BUKIT TIMAH NATURE RESERVE

CHINESE GARDEN

Nanyang Girls' High Sch
National Junior College

Ideally situated, in harmony with your world

1KM PROXIMITY



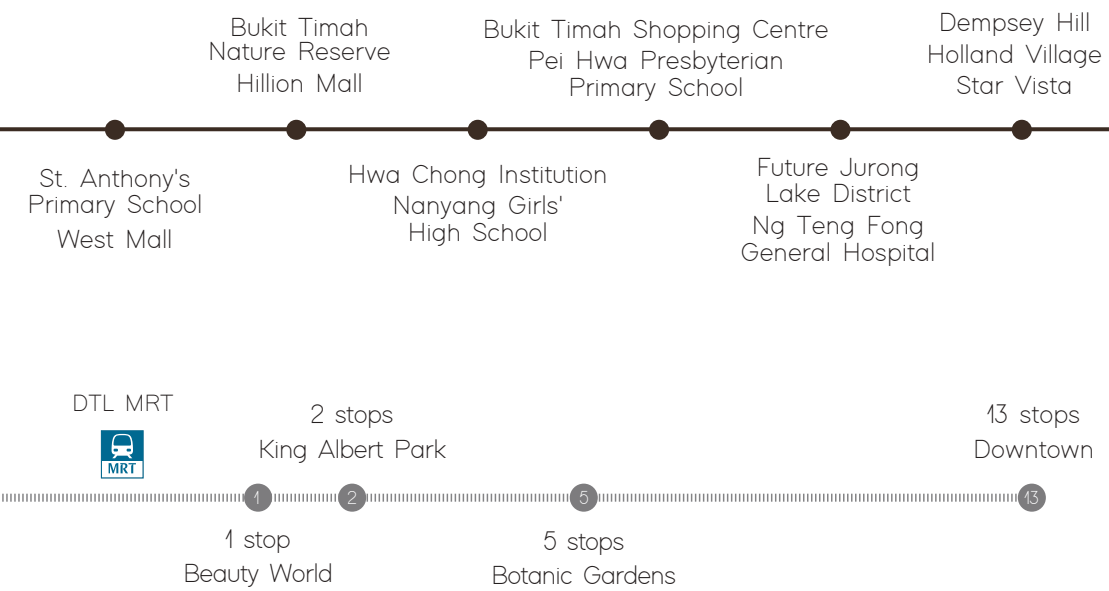
Midwood is the ideal starting point to explore just about anything you could want, including a variety of nature parks that imbue the district with organic charm.

A good selection of lifestyle indulgences can be found literally next door, at HillV2 Mall, or across the street, at the Hillview Community Club.

You're also at the heart of the road and public transport networks, with the Hillview MRT Station close to home, and the BKE and PIE within minutes by car.

Enjoy fuss-free journeys to prestigious schools as well as first-rate medical care at Ng Teng Fong General Hospital.

Also nearby are Holland Village, Orchard Road, Shenton Way, and the burgeoning Jurong Lake District.



Holland Village



Central Business District



Star Vista



Singapore Botanic Gardens



Dempsey Hill

so much
nature,
so close
to home



Midwood sits between two nature enclaves so a hike or leisure walk requires no more than a spur-of-the-moment decision.

A short drive will take you to Bukit Batok Town Park, also known as Little Guilin. Wonderfully landscaped, it has become a favourite among nature lovers and photography enthusiasts. Nearby, Bukit Batok Nature Park offers tranquil settings

for outdoor exercise. On the other side along Upper Bukit Timah Road, Dairy Farm Nature Park packs a surprising diversity of experiences in its compact 63 hectares of land. At its south-western tip is the picturesque wetland habitat that was once the Singapore Quarry. Former granite quarries are intrinsic to the area, lending design inspiration to the exteriors of Midwood.



Little Guilin



Bukit Batok Nature Park



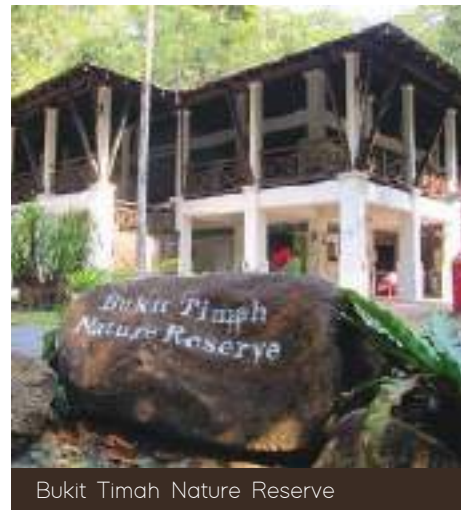
Dairy Farm Nature Park

Continue your nature exploration towards Bukit Timah Nature Reserve. Home to the highest natural point and largest surviving primary rainforest on the island, it boasts one of the planet's richest, more diverse ecological systems.

The park's close proximity to Rail Corridor (Central) opens even more opportunities for exploration in the wild. Anchored at each end by

the Hillview and King Albert Park Downtown Line MRT stations, the Central section of the 24km railway will re-emerge as three distinct discovery themed parks: Heritage and Culture, Biodiversity and Greenery, and Recreation.

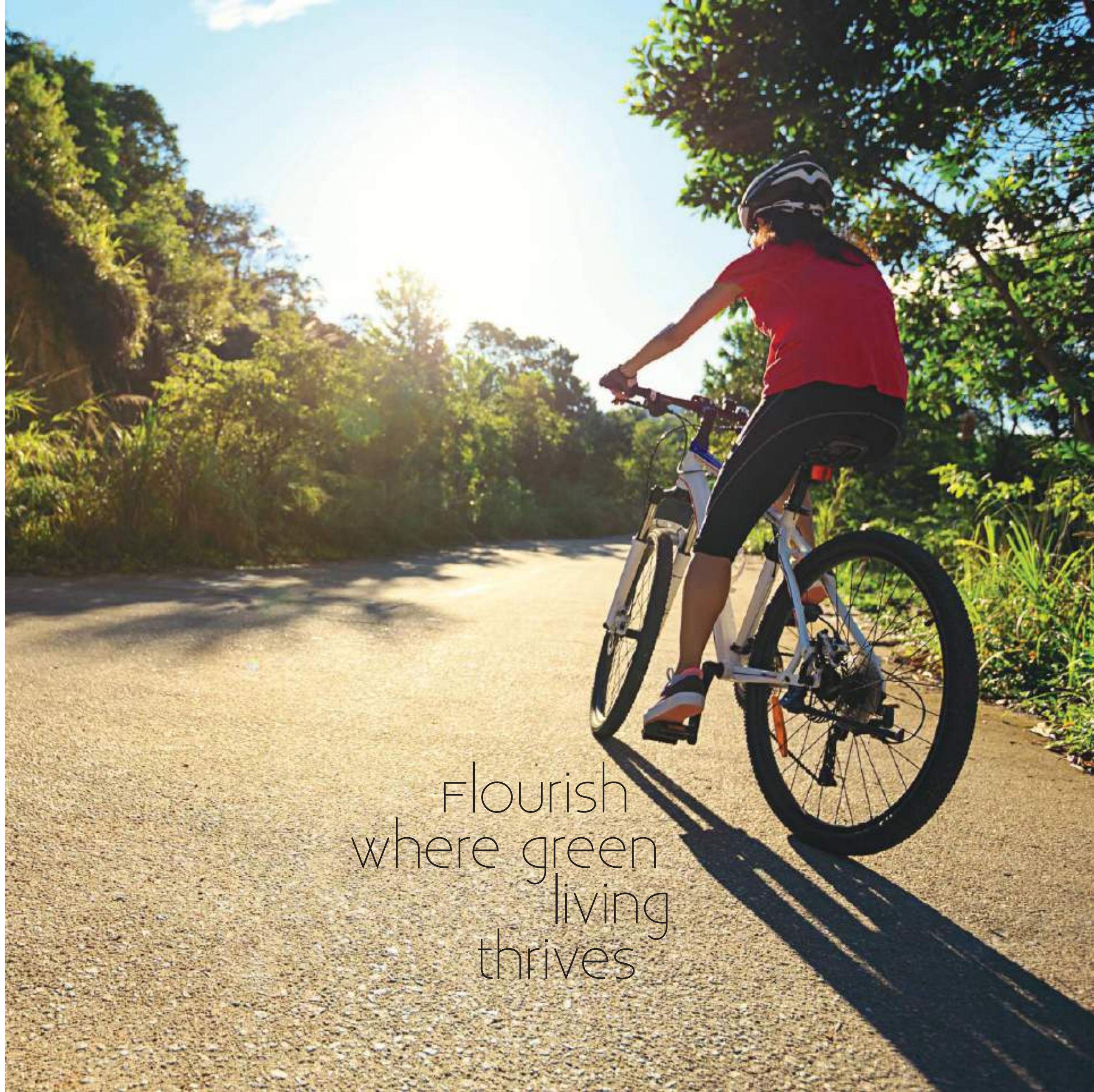
Being so close to these exciting transformations, your home at Midwood will put you in a truly enviable location.



Bukit Timah Nature Reserve



Rail Corridor (Central)



Flourish
where green
living
thrives



Feast on a host of lifestyle pleasures

Your neighbourhood is blessed with an array of shop-and-dine options, many within a short distance of your door.

Across the street at HillV2, you can take your pick from specialty restaurants and cafes that offer regional cuisines, desserts and spirits. You'll also find a supermarket as well as service providers for hair, beauty, medical, dental and pet care.

A little further up, The Rail Mall is an excellent choice when you want an expanded range of conveniences. If you're eyeing al fresco dining, this charming destination with a retro-cool vibe and an unhurried atmosphere will not disappoint.

For quick lunches, breaks and dinner fares, Bukit Timah Market is a real foodie haunt especially for local cuisines and everyday delicacies.

When it comes to international and local schools, parents will delight in a wide choice in the vicinity - CHIJ Our Lady Queen of Peace, St. Francis Methodist School, German European School Singapore and Pei Hwa Presbyterian Primary School, to name a few - all accessible within minutes' drive.



This is how you make an entrance

The arrival podium exudes a regale ambience, with sumptuous materials and design details enveloping the open space. The expansive entrance enhanced by high-ceilinged sheltered hallways will greet you and your guests upon your approach into the development.



A reflection of sublime moments

Contemplate life, ponder the sky, or just zone out and relax in the clear waters of the 50-metre rooftop infinity pool. Endless and unblocked vistas before you are perfect for quiet introspection. When it's time to kick up a splashing good time, get down to the leisure pool on the first floor.

indulgences cascade before your eyes

Where will you escape to today? At Midwood, you need not leave to have fun outdoors - the tennis court and outdoor fitness corner let you break a sweat without going far. Or you can make your way to the well-equipped indoor gym to meet your fitness goals. No matter the space, you will be infused with the laid back, energising and free-spirited vibes that the Midwood embodies.



refined living at every turn

Panoramic vistas and spacious footpaths are invitations to make the most of your outdoor explorations. The wide-open courtyard facilitates a natural and seamless movement through the spaces. Enjoy relaxed al fresco moments at any of the BBQ pits, and at the clubhouse so close to the leisure pool.

All types of events and celebrations have been carefully considered so you'll have dining facilities for a cosy event or a cocktail party.



Artist's Impression

A carefree life for all

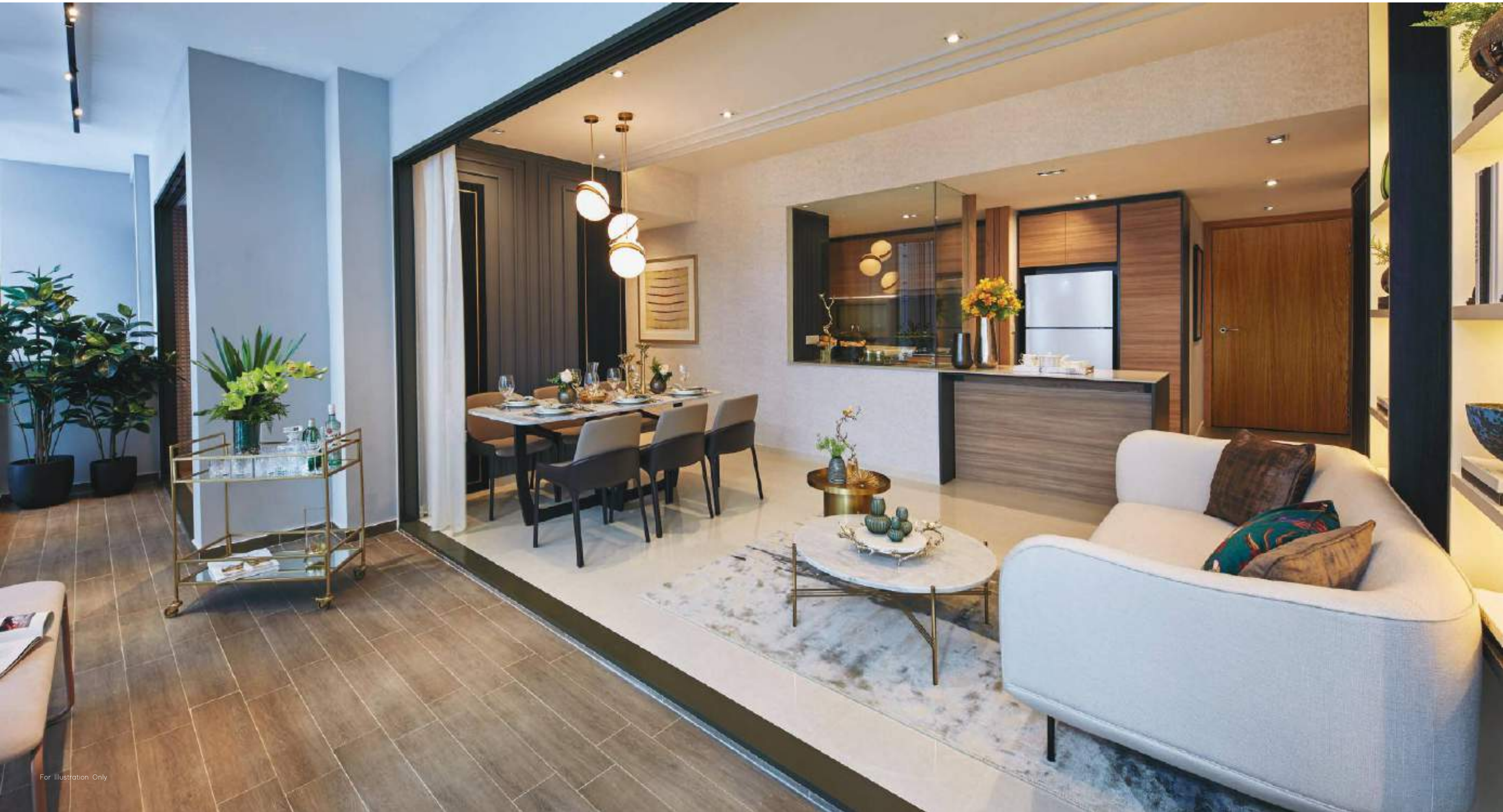
The little ones are never left out - let them frolic in their very own kid's pool, or exercise their boundless creativity with mini adventures at the community lawn.

And for those times when it is needed, there's a childcare centre on the premises to cater to your needs.



The uplifting feeling of space

Home is the harmonious fusion of lightness and space for real relaxation and entertainment. The wide balcony offers open sightlines, outdoor views and stunning natural light, instantly amplifying one's sense of openness.



A taste for elegance

Here's a peek into exquisite living, at once aesthetically appealing and flawlessly functional. The open plan concept creates living spaces that inspire a sense of relaxed comfort, while thoughtful layouts and the inclusion of premium appliances let you go about your daily activities with optimum ease.



For Illustration Only



For Illustration Only

With a well-considered layout, there are more usable spaces than you might think. Transform a study room into a guest room, if you wish. Or perhaps a game room that doubles up as home entertainment centre. It's your call. At Midwood, we put your personal preferences in mind.

A sanctuary Apartment

When the time for rest comes, seek refuge amid cool, calm interiors and carefully curated decor. Then there's the feeling of sublime calmness that just might cause a reluctance to get out of bed in the morning.

Do begin, and conclude your day, in sublime privacy with a bathing experience that goes beyond the lushness of fittings and furnishing.

The overall design is accented with thoughtful details, including a wardrobe that comes with smart storage. Cleverly hidden within are shelves and compartments of varying sizes as well as carefully placed hooks.





SITE PLAN

Legend

- 1-Bedroom
- 1-Bedroom (with Study)
- 2-Bedroom
- 2-Bedroom (with Study)
- 3-Bedroom
- 3-Bedroom (with Yard)
- 4-Bedroom
- Water tank position (roof level)

List of Facilities:

Facilities located at 1st storey:

- a** Clubhouse, incorporating:
 - Function rooms (2 nos)
 - Reading lounge
 - Poolside lounge deck
- b** Leisure pool (surfacing area approx. 450m²), incorporating:
 - Pool deck (3 nos)
 - Lounge deck (1 no)
 - Outdoor shower (1 no)
- c** Changing room (male and female changing room, each with steam room)
- d** Accessible toilet
- e** Cascading water wall

- f** Hydrotherapy pool
- g** Spa suite with jacuzzi
- h** Yoga lawn
- i** Community lawn
- j** Community corner
- k** Gardenia courtyard
- l** Crepe Myrtle courtyard
- m** Picnic pavilion with BBQ pit
- n** Picnic lawn
- o** Tennis court (1 no, hard court)
- p** Bauhinia walk
- q** Hammock enclave
- r** Management office
- s** Resident's drop off
- t** Arrival court

- u** Guard House
 - v** Entry and exit to carpark
 - w** Pedestrian side gate
 - x** Bin centre
 - y** Substation
 - z** Generator set
 - aa** Childcare Centre
 - bb** Childcare Centre's dropoff
 - cc** Childcare Centre's parking
- Facilities located at 2nd storey (roof of substation):**
- dd** Link bridge
 - ee** Outdoor fitness corner
 - ff** Private dining pavilion with BBQ pit

Facilities located at 7th storey (roof of MSCP):

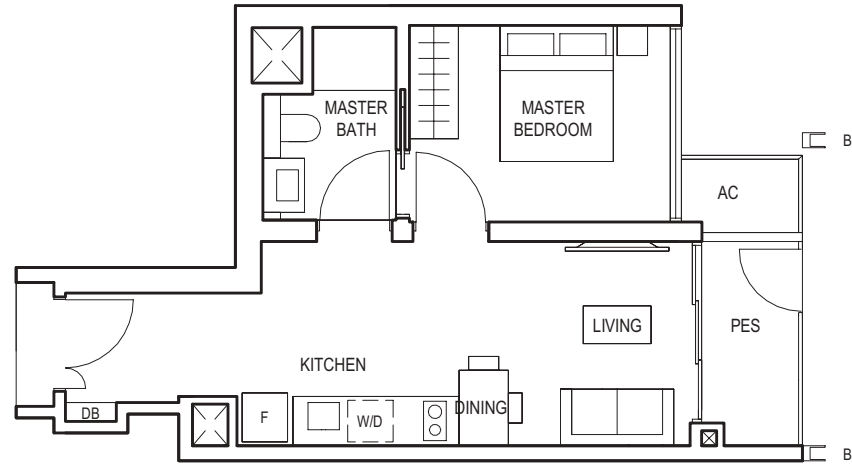
- gg** 50m infinity lap pool (surfacing area approx. 400m²), incorporating:
 - Sun bathing deck (2 nos)
 - Outdoor shower (2 nos)
- hh** Gym
- ii** Palm court
- jj** Accessible toilet (2 nos)
- kk** Kid's pool with aqua play equipment (surfacing area approx. 75m²), incorporating:
 - Fun deck (2 nos)
- ll** Children's Playground
- mm** Gourmet pavilion with BBQ pit
- nn** Party Deck
- oo** Wine & dine pavilion with BBQ pit
- pp** Stargazing Deck

1-BEDROOM

TYPE (1)a1

#01-16

45 sq m

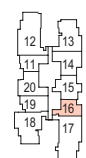


FULL HEIGHT VERTICAL VISUAL SCREENS:
A - FIXED SCREEN
B - FIXED FIN

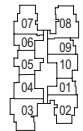
LEGEND:
F - FRIDGE DB - DISTRIBUTION BOARD WC - WATER CLOSET W/D - WASHER CUM DRYER W - WASHER D - DRYER AC - AIRCON LEDGE
PES - PRIVATE ENCLOSED SPACE

- * VISUAL SCREENS ARE SUBJECT TO VISUAL CONTROL REQUIREMENT IMPOSED/APPROVED BY THE RELEVANT AUTHORITY.
- * AREA INCLUDES AIRCON (AC) LEDGE, BALCONY AND PRIVATE ENCLOSED SPACE (PES).
- * THE BALCONY/PRIVATE ENCLOSED SPACE (PES) SHALL NOT BE ENCLOSED UNLESS WITH THE APPROVED BALCONY/PES SCREEN. FOR AN ILLUSTRATION OF THE APPROVED BALCONY/PES SCREEN, PLEASE REFER TO THE DIAGRAM ANNEXED HERETO AS 'ANNEXURE 1'.

BLOCK 10



BLOCK 8



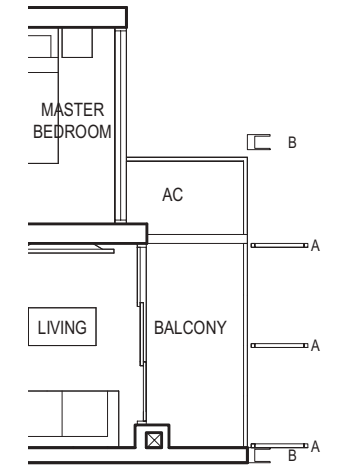
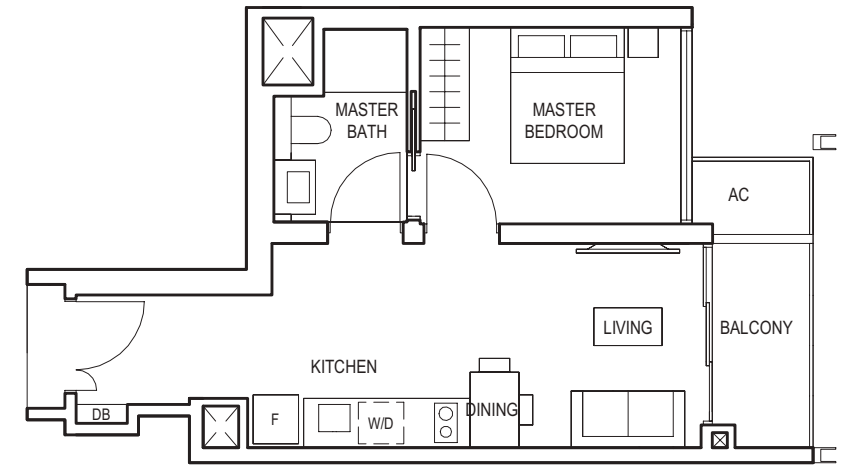
KEY PLAN

1-BEDROOM

TYPE (1)a

#02-16 to #29-16

45 sq m



Applicable to unit
#25-16 to #29-16 only

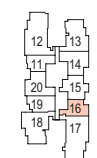


FULL HEIGHT VERTICAL VISUAL SCREENS:
A - FIXED SCREEN
B - FIXED FIN

LEGEND:
F - FRIDGE DB - DISTRIBUTION BOARD WC - WATER CLOSET W/D - WASHER CUM DRYER W - WASHER D - DRYER AC - AIRCON LEDGE
PES - PRIVATE ENCLOSED SPACE

- * VISUAL SCREENS ARE SUBJECT TO VISUAL CONTROL REQUIREMENT IMPOSED/APPROVED BY THE RELEVANT AUTHORITY.
- * AREA INCLUDES AIRCON (AC) LEDGE, BALCONY AND PRIVATE ENCLOSED SPACE (PES).
- * THE BALCONY/PRIVATE ENCLOSED SPACE (PES) SHALL NOT BE ENCLOSED UNLESS WITH THE APPROVED BALCONY/PES SCREEN. FOR AN ILLUSTRATION OF THE APPROVED BALCONY/PES SCREEN, PLEASE REFER TO THE DIAGRAM ANNEXED HERETO AS 'ANNEXURE 1'.

BLOCK 10



BLOCK 8



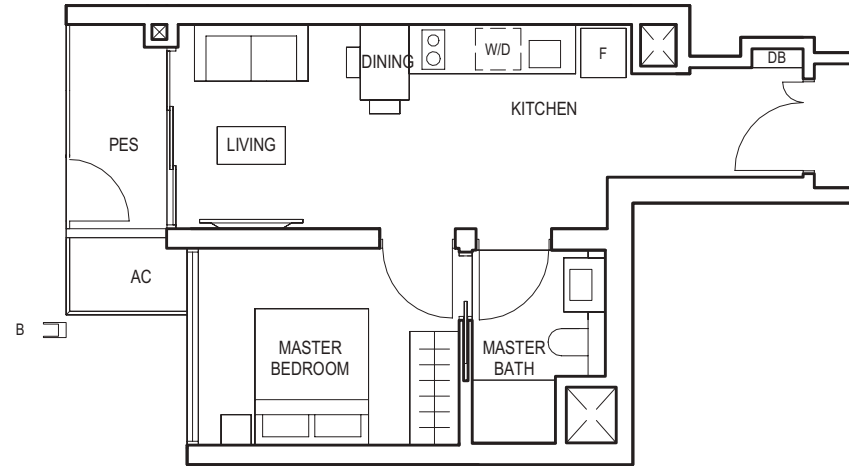
KEY PLAN

1-BEDROOM

TYPE (1)a1

#01-06

45 sq m

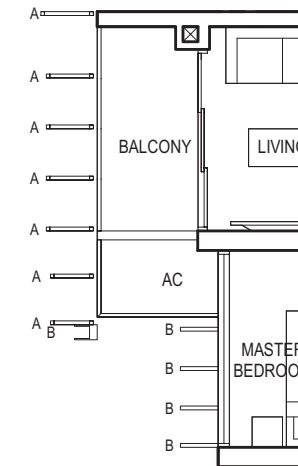


1-BEDROOM

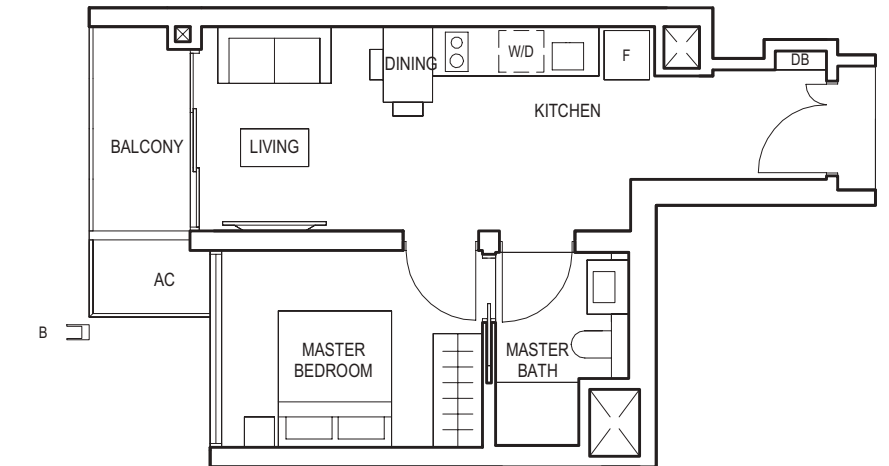
TYPE (1)a

#02-06 to #29-06

45 sq m



Applicable to unit
#13-06 to #29-06 only



FULL HEIGHT VERTICAL VISUAL SCREENS:
A - FIXED SCREEN
B - FIXED FIN

LEGEND:
F - FRIDGE DB - DISTRIBUTION BOARD WC - WATER CLOSET W/D - WASHER CUM DRYER W - WASHER D - DRYER AC - AIRCON LEDGE
PES - PRIVATE ENCLOSED SPACE

- * VISUAL SCREENS ARE SUBJECT TO VISUAL CONTROL REQUIREMENT IMPOSED/APPROVED BY THE RELEVANT AUTHORITY.
- * AREA INCLUDES AIRCON (AC) LEDGE, BALCONY AND PRIVATE ENCLOSED SPACE (PES).
- * THE BALCONY/PRIVATE ENCLOSED SPACE (PES) SHALL NOT BE ENCLOSED UNLESS WITH THE APPROVED BALCONY/PES SCREEN. FOR AN ILLUSTRATION OF THE APPROVED BALCONY/PES SCREEN, PLEASE REFER TO THE DIAGRAM ANNEXED HERETO AS 'ANNEXURE 1'.

BLOCK 10



BLOCK 8



KEY PLAN

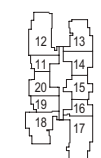


FULL HEIGHT VERTICAL VISUAL SCREENS:
A - FIXED SCREEN
B - FIXED FIN

LEGEND:
F - FRIDGE DB - DISTRIBUTION BOARD WC - WATER CLOSET W/D - WASHER CUM DRYER W - WASHER D - DRYER AC - AIRCON LEDGE
PES - PRIVATE ENCLOSED SPACE

- * VISUAL SCREENS ARE SUBJECT TO VISUAL CONTROL REQUIREMENT IMPOSED/APPROVED BY THE RELEVANT AUTHORITY.
- * AREA INCLUDES AIRCON (AC) LEDGE, BALCONY AND PRIVATE ENCLOSED SPACE (PES).
- * THE BALCONY/PRIVATE ENCLOSED SPACE (PES) SHALL NOT BE ENCLOSED UNLESS WITH THE APPROVED BALCONY/PES SCREEN. FOR AN ILLUSTRATION OF THE APPROVED BALCONY/PES SCREEN, PLEASE REFER TO THE DIAGRAM ANNEXED HERETO AS 'ANNEXURE 1'.

BLOCK 10



BLOCK 8



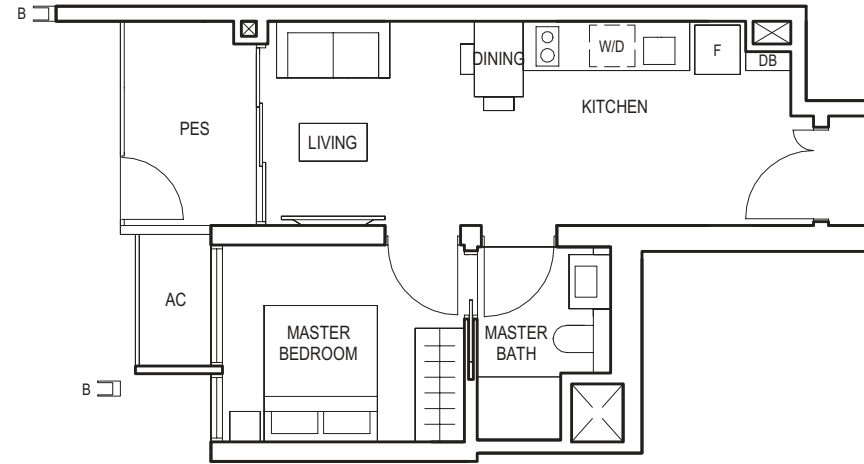
KEY PLAN

1-BEDROOM

TYPE (1)b1

#01-11

45 sq m

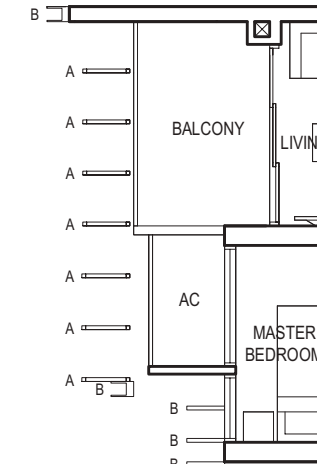


1-BEDROOM

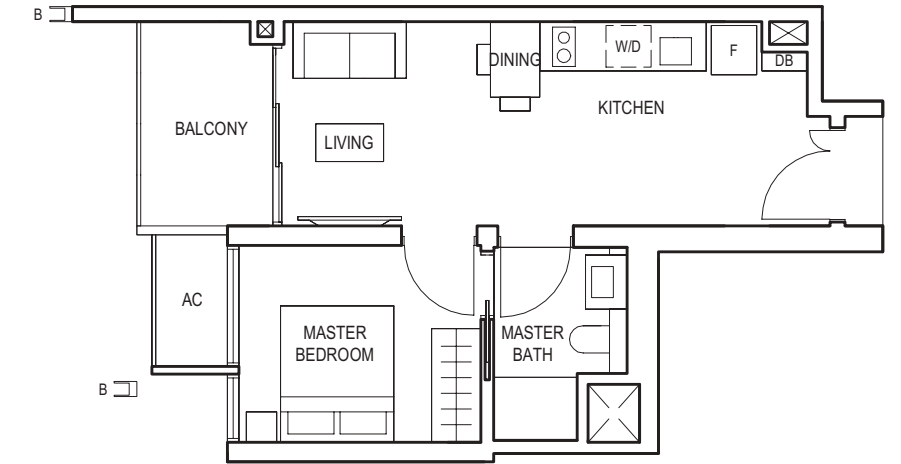
TYPE (1)b

#02-11 to #29-11

45 sq m



Applicable to unit
#13-11 to #29-11 only

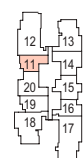


FULL HEIGHT VERTICAL VISUAL SCREENS:
A - FIXED SCREEN
B - FIXED FIN

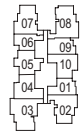
LEGEND:
F - FRIDGE DB - DISTRIBUTION BOARD WC - WATER CLOSET W/D - WASHER CUM DRYER W - WASHER D - DRYER AC - AIRCON LEDGE
PES - PRIVATE ENCLOSED SPACE

- * VISUAL SCREENS ARE SUBJECT TO VISUAL CONTROL REQUIREMENT IMPOSED/APPROVED BY THE RELEVANT AUTHORITY.
- * AREA INCLUDES AIRCON (AC) LEDGE, BALCONY AND PRIVATE ENCLOSED SPACE (PES).
- * THE BALCONY/PRIVATE ENCLOSED SPACE (PES) SHALL NOT BE ENCLOSED UNLESS WITH THE APPROVED BALCONY/PES SCREEN. FOR AN ILLUSTRATION OF THE APPROVED BALCONY/PES SCREEN, PLEASE REFER TO THE DIAGRAM ANNEXED HERETO AS 'ANNEXURE 1'.

BLOCK 10



BLOCK 8



KEY PLAN

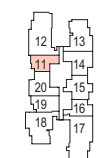


FULL HEIGHT VERTICAL VISUAL SCREENS:
A - FIXED SCREEN
B - FIXED FIN

LEGEND:
F - FRIDGE DB - DISTRIBUTION BOARD WC - WATER CLOSET W/D - WASHER CUM DRYER W - WASHER D - DRYER AC - AIRCON LEDGE
PES - PRIVATE ENCLOSED SPACE

- * VISUAL SCREENS ARE SUBJECT TO VISUAL CONTROL REQUIREMENT IMPOSED/APPROVED BY THE RELEVANT AUTHORITY.
- * AREA INCLUDES AIRCON (AC) LEDGE, BALCONY AND PRIVATE ENCLOSED SPACE (PES).
- * THE BALCONY/PRIVATE ENCLOSED SPACE (PES) SHALL NOT BE ENCLOSED UNLESS WITH THE APPROVED BALCONY/PES SCREEN. FOR AN ILLUSTRATION OF THE APPROVED BALCONY/PES SCREEN, PLEASE REFER TO THE DIAGRAM ANNEXED HERETO AS 'ANNEXURE 1'.

BLOCK 10



BLOCK 8



KEY PLAN

1-BEDROOM

TYPE (1)b

#03-01 to #29-01

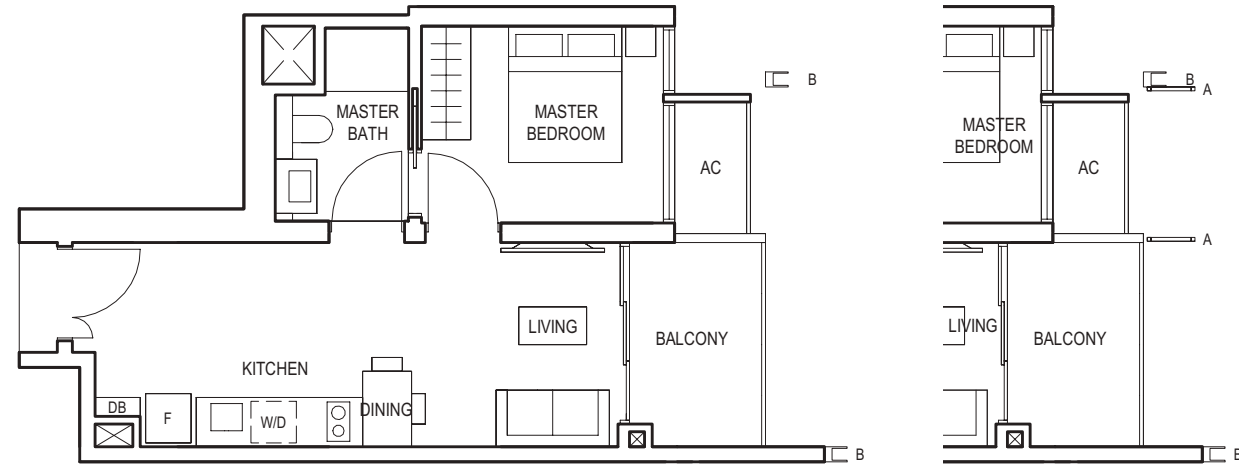
45 sq m

1-BEDROOM

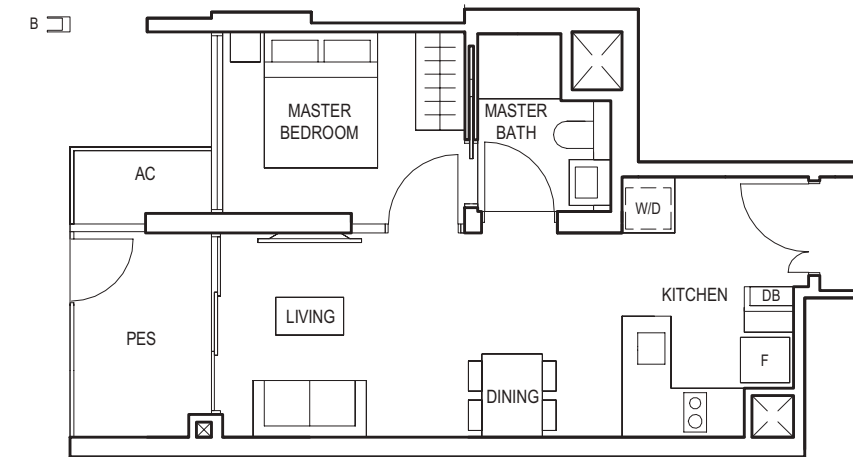
TYPE (1)c1

#01-04, #01-14

46 sq m



Applicable to unit
#25-01 to #29-01 only



Applicable to unit
#01-14 only



FULL HEIGHT VERTICAL VISUAL SCREENS:
A - FIXED SCREEN
B - FIXED FIN

LEGEND:
F - FRIDGE DB - DISTRIBUTION BOARD WC - WATER CLOSET W/D - WASHER CUM DRYER W - WASHER D - DRYER AC - AIRCON LEDGE
PES - PRIVATE ENCLOSED SPACE

- * VISUAL SCREENS ARE SUBJECT TO VISUAL CONTROL REQUIREMENT IMPOSED/APPROVED BY THE RELEVANT AUTHORITY.
- * AREA INCLUDES AIRCON (AC) LEDGE, BALCONY AND PRIVATE ENCLOSED SPACE (PES).
- * THE BALCONY/PRIVATE ENCLOSED SPACE (PES) SHALL NOT BE ENCLOSED UNLESS WITH THE APPROVED BALCONY/PES SCREEN. FOR AN ILLUSTRATION OF THE APPROVED BALCONY/PES SCREEN, PLEASE REFER TO THE DIAGRAM ANNEXED HERETO AS 'ANNEXURE 1'.

BLOCK 10



BLOCK 8



KEY PLAN

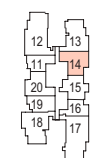


FULL HEIGHT VERTICAL VISUAL SCREENS:
A - FIXED SCREEN
B - FIXED FIN

LEGEND:
F - FRIDGE DB - DISTRIBUTION BOARD WC - WATER CLOSET W/D - WASHER CUM DRYER W - WASHER D - DRYER AC - AIRCON LEDGE
PES - PRIVATE ENCLOSED SPACE

- * VISUAL SCREENS ARE SUBJECT TO VISUAL CONTROL REQUIREMENT IMPOSED/APPROVED BY THE RELEVANT AUTHORITY.
- * AREA INCLUDES AIRCON (AC) LEDGE, BALCONY AND PRIVATE ENCLOSED SPACE (PES).
- * THE BALCONY/PRIVATE ENCLOSED SPACE (PES) SHALL NOT BE ENCLOSED UNLESS WITH THE APPROVED BALCONY/PES SCREEN. FOR AN ILLUSTRATION OF THE APPROVED BALCONY/PES SCREEN, PLEASE REFER TO THE DIAGRAM ANNEXED HERETO AS 'ANNEXURE 1'.

BLOCK 10



BLOCK 8



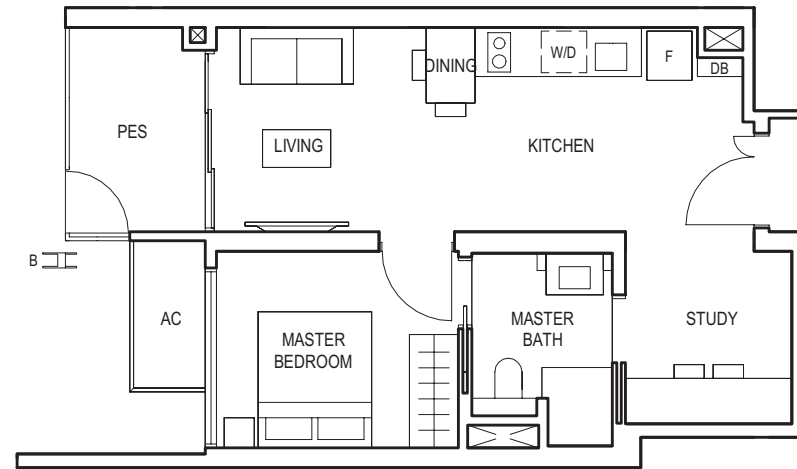
KEY PLAN

1-BEDROOM (with Study)

TYPE (1+1)a1

#01-19

51 sq m

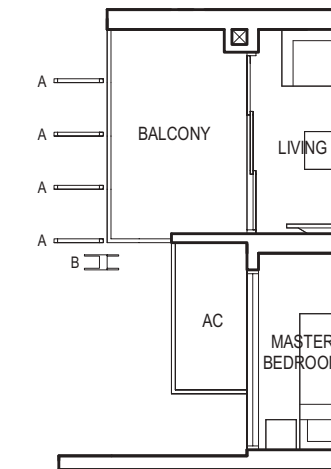


1-BEDROOM (with Study)

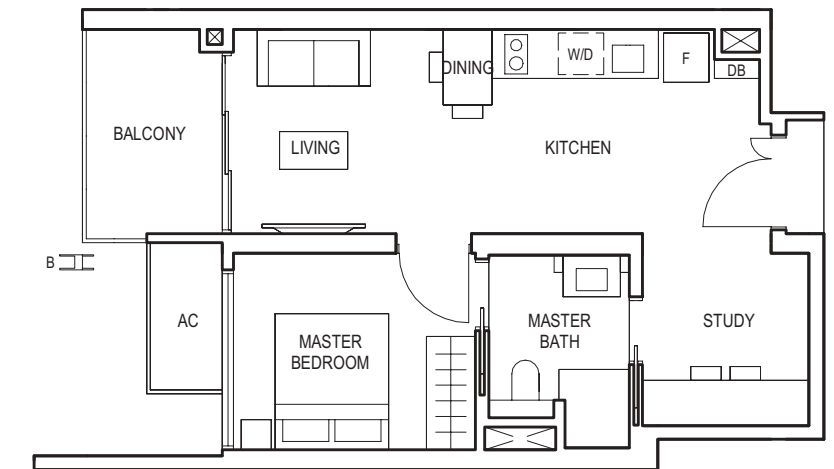
TYPE (1+1)a

#02-19 to #29-19

51 sq m



Applicable to unit
#13-19 to #29-19 only

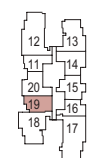


FULL HEIGHT VERTICAL VISUAL SCREENS:
A - FIXED SCREEN
B - FIXED FIN

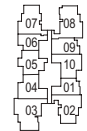
LEGEND:
F - FRIDGE DB - DISTRIBUTION BOARD WC - WATER CLOSET W/D - WASHER CUM DRYER W - WASHER D - DRYER AC - AIRCON LEDGE
PES - PRIVATE ENCLOSED SPACE

- * VISUAL SCREENS ARE SUBJECT TO VISUAL CONTROL REQUIREMENT IMPOSED/APPROVED BY THE RELEVANT AUTHORITY.
- * AREA INCLUDES AIRCON (AC) LEDGE, BALCONY AND PRIVATE ENCLOSED SPACE (PES).
- * THE BALCONY/PRIVATE ENCLOSED SPACE (PES) SHALL NOT BE ENCLOSED UNLESS WITH THE APPROVED BALCONY/PES SCREEN. FOR AN ILLUSTRATION OF THE APPROVED BALCONY/PES SCREEN, PLEASE REFER TO THE DIAGRAM ANNEXED HERETO AS 'ANNEXURE 1'.

BLOCK 10



BLOCK 8



KEY PLAN

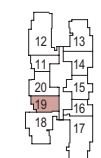


FULL HEIGHT VERTICAL VISUAL SCREENS:
A - FIXED SCREEN
B - FIXED FIN

LEGEND:
F - FRIDGE DB - DISTRIBUTION BOARD WC - WATER CLOSET W/D - WASHER CUM DRYER W - WASHER D - DRYER AC - AIRCON LEDGE
PES - PRIVATE ENCLOSED SPACE

- * VISUAL SCREENS ARE SUBJECT TO VISUAL CONTROL REQUIREMENT IMPOSED/APPROVED BY THE RELEVANT AUTHORITY.
- * AREA INCLUDES AIRCON (AC) LEDGE, BALCONY AND PRIVATE ENCLOSED SPACE (PES).
- * THE BALCONY/PRIVATE ENCLOSED SPACE (PES) SHALL NOT BE ENCLOSED UNLESS WITH THE APPROVED BALCONY/PES SCREEN. FOR AN ILLUSTRATION OF THE APPROVED BALCONY/PES SCREEN, PLEASE REFER TO THE DIAGRAM ANNEXED HERETO AS 'ANNEXURE 1'.

BLOCK 10



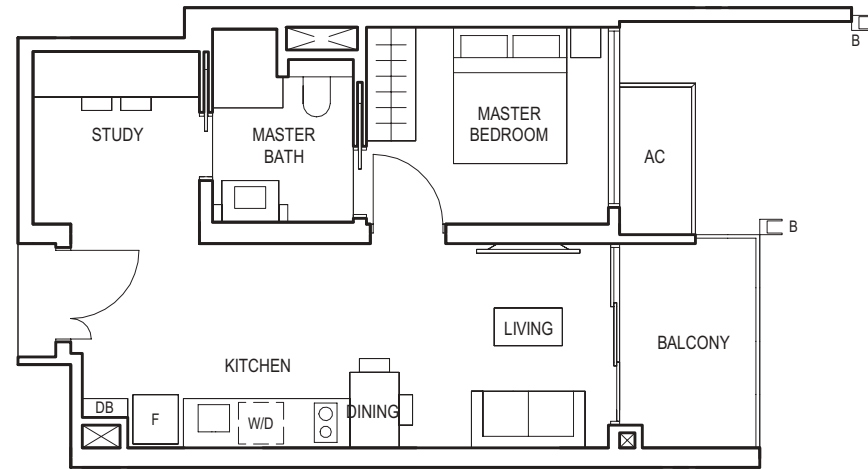
BLOCK 8



KEY PLAN

1-BEDROOM (with Study)

TYPE (1+1)a
#03-09 to #29-09
51 sq m

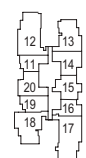


FULL HEIGHT VERTICAL VISUAL SCREENS:
A - FIXED SCREEN
B - FIXED FIN

LEGEND:
F - FRIDGE DB - DISTRIBUTION BOARD WC - WATER CLOSET W/D - WASHER CUM DRYER W - WASHER D - DRYER AC - AIRCON LEDGE
PES - PRIVATE ENCLOSED SPACE

- * VISUAL SCREENS ARE SUBJECT TO VISUAL CONTROL REQUIREMENT IMPOSED/APPROVED BY THE RELEVANT AUTHORITY.
- * AREA INCLUDES AIRCON (AC) LEDGE, BALCONY AND PRIVATE ENCLOSED SPACE (PES).
- * THE BALCONY/PRIVATE ENCLOSED SPACE (PES) SHALL NOT BE ENCLOSED UNLESS WITH THE APPROVED BALCONY/PES SCREEN. FOR AN ILLUSTRATION OF THE APPROVED BALCONY/PES SCREEN, PLEASE REFER TO THE DIAGRAM ANNEXED HERETO AS 'ANNEXURE 1'.

BLOCK 10



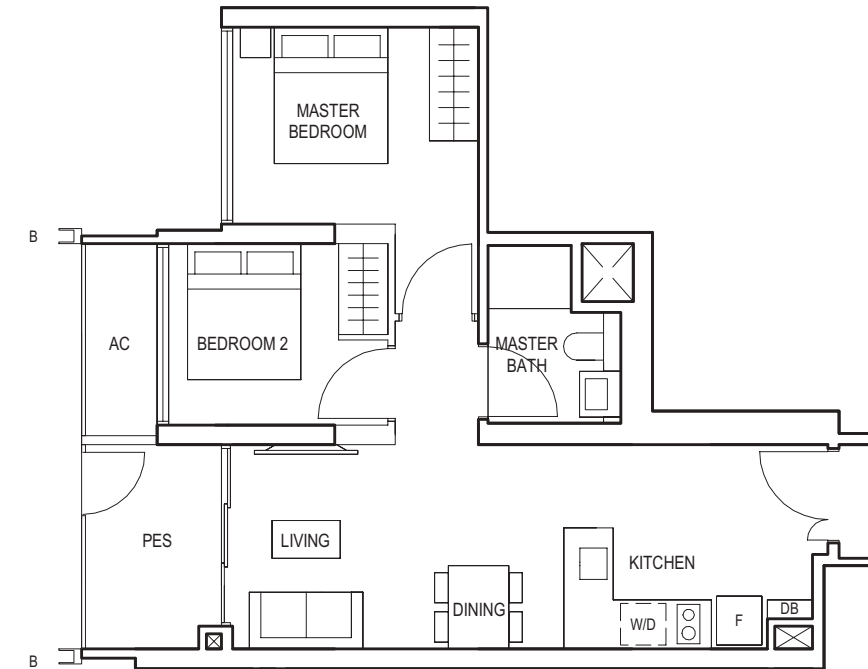
BLOCK 8



KEY PLAN

2-BEDROOM

TYPE (2)a1
#01-20
59 sq m

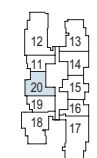


FULL HEIGHT VERTICAL VISUAL SCREENS:
A - FIXED SCREEN
B - FIXED FIN

LEGEND:
F - FRIDGE DB - DISTRIBUTION BOARD WC - WATER CLOSET W/D - WASHER CUM DRYER W - WASHER D - DRYER AC - AIRCON LEDGE
PES - PRIVATE ENCLOSED SPACE

- * VISUAL SCREENS ARE SUBJECT TO VISUAL CONTROL REQUIREMENT IMPOSED/APPROVED BY THE RELEVANT AUTHORITY.
- * AREA INCLUDES AIRCON (AC) LEDGE, BALCONY AND PRIVATE ENCLOSED SPACE (PES).
- * THE BALCONY/PRIVATE ENCLOSED SPACE (PES) SHALL NOT BE ENCLOSED UNLESS WITH THE APPROVED BALCONY/PES SCREEN. FOR AN ILLUSTRATION OF THE APPROVED BALCONY/PES SCREEN, PLEASE REFER TO THE DIAGRAM ANNEXED HERETO AS 'ANNEXURE 1'.

BLOCK 10



BLOCK 8



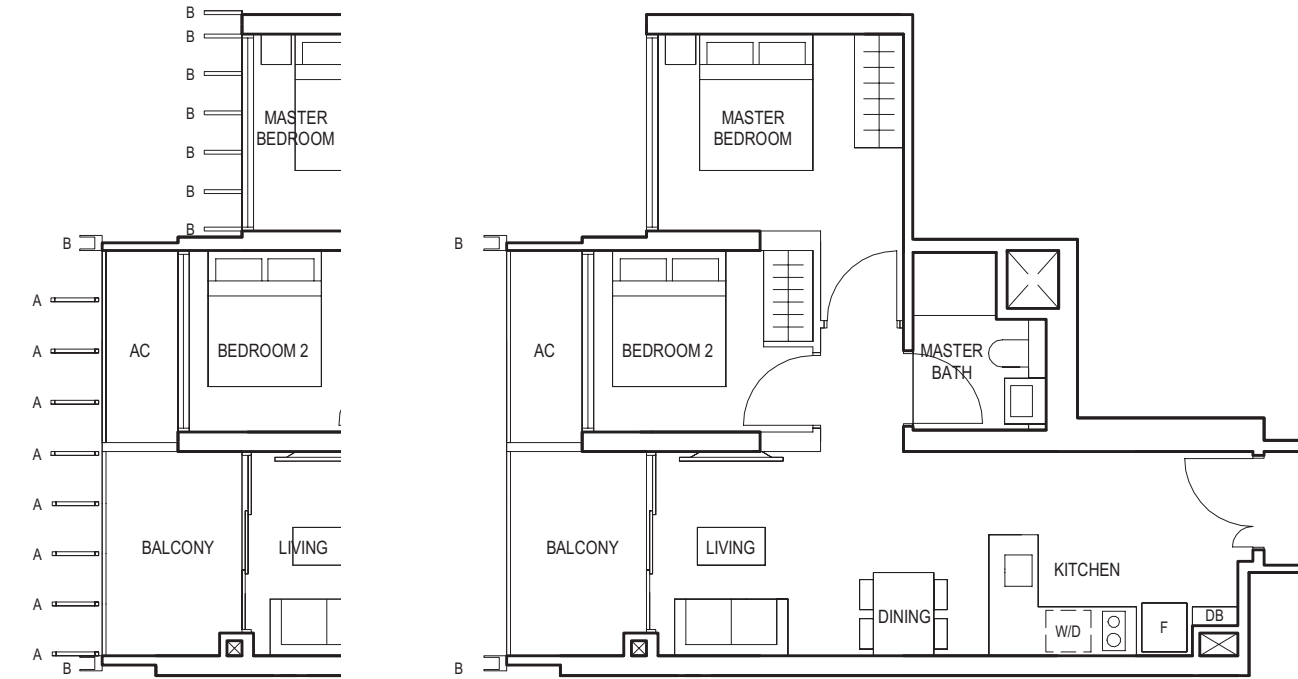
KEY PLAN

2-BEDROOM

TYPE (2)a

#02-20 to #29-20

59 sq m



Applicable to unit
#13-20 to #29-20 only

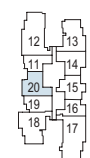


FULL HEIGHT VERTICAL VISUAL SCREENS:
A - FIXED SCREEN
B - FIXED FIN

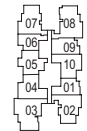
LEGEND:
F - FRIDGE DB - DISTRIBUTION BOARD WC - WATER CLOSET W/D - WASHER CUM DRYER W - WASHER D - DRYER AC - AIRCON LEDGE
PES - PRIVATE ENCLOSED SPACE

- * VISUAL SCREENS ARE SUBJECT TO VISUAL CONTROL REQUIREMENT IMPOSED/APPROVED BY THE RELEVANT AUTHORITY.
- * AREA INCLUDES AIRCON (AC) LEDGE, BALCONY AND PRIVATE ENCLOSED SPACE (PES).
- * THE BALCONY/PRIVATE ENCLOSED SPACE (PES) SHALL NOT BE ENCLOSED UNLESS WITH THE APPROVED BALCONY/PES SCREEN. FOR AN ILLUSTRATION OF THE APPROVED BALCONY/PES SCREEN, PLEASE REFER TO THE DIAGRAM ANNEXED HERETO AS 'ANNEXURE 1'.

BLOCK 10



BLOCK 8



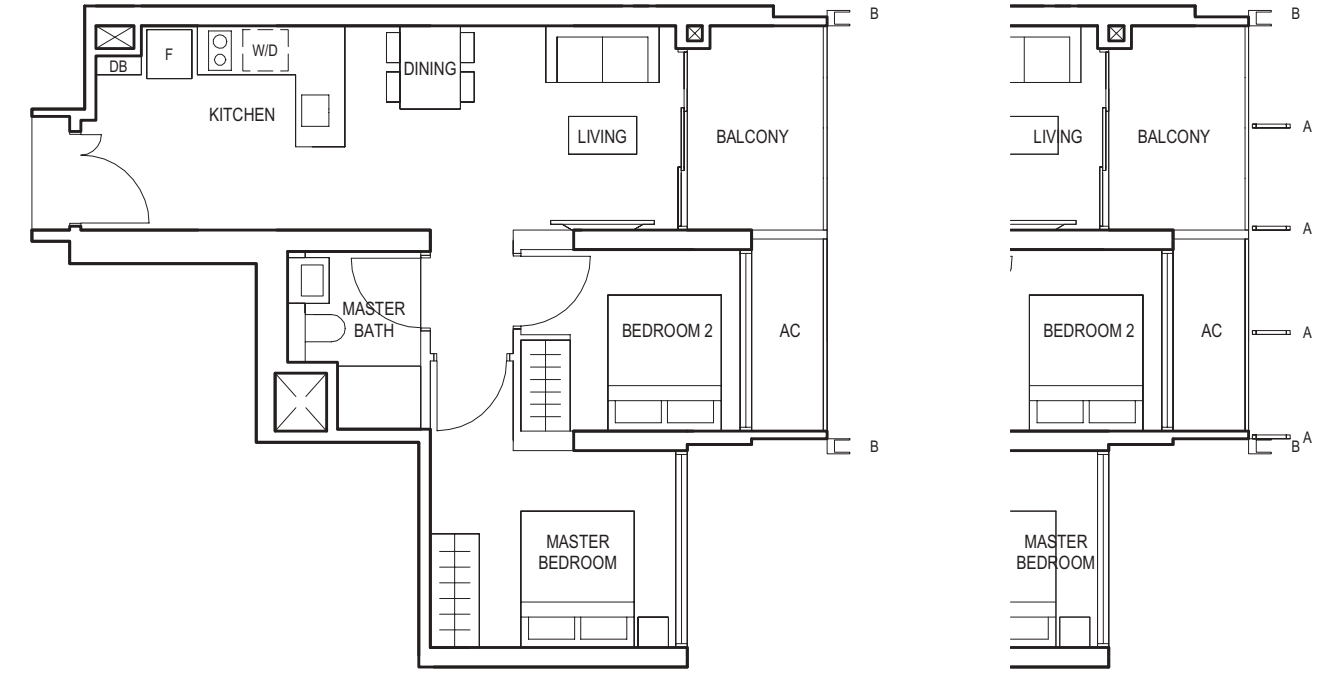
KEY PLAN

2-BEDROOM

TYPE (2)a

#03-10 to #29-10

59 sq m



Applicable to unit
#25-10 to #29-10 only

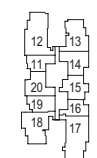


FULL HEIGHT VERTICAL VISUAL SCREENS:
A - FIXED SCREEN
B - FIXED FIN

LEGEND:
F - FRIDGE DB - DISTRIBUTION BOARD WC - WATER CLOSET W/D - WASHER CUM DRYER W - WASHER D - DRYER AC - AIRCON LEDGE
PES - PRIVATE ENCLOSED SPACE

- * VISUAL SCREENS ARE SUBJECT TO VISUAL CONTROL REQUIREMENT IMPOSED/APPROVED BY THE RELEVANT AUTHORITY.
- * AREA INCLUDES AIRCON (AC) LEDGE, BALCONY AND PRIVATE ENCLOSED SPACE (PES).
- * THE BALCONY/PRIVATE ENCLOSED SPACE (PES) SHALL NOT BE ENCLOSED UNLESS WITH THE APPROVED BALCONY/PES SCREEN. FOR AN ILLUSTRATION OF THE APPROVED BALCONY/PES SCREEN, PLEASE REFER TO THE DIAGRAM ANNEXED HERETO AS 'ANNEXURE 1'.

BLOCK 10



BLOCK 8



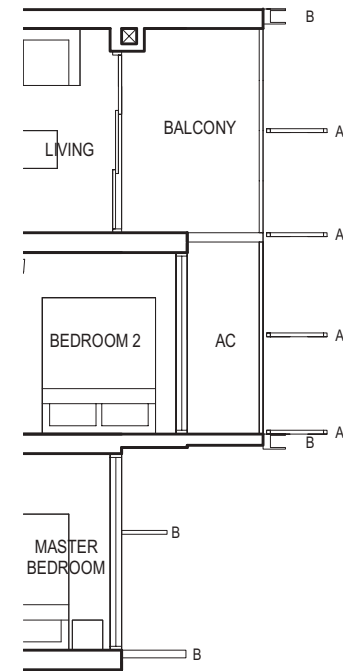
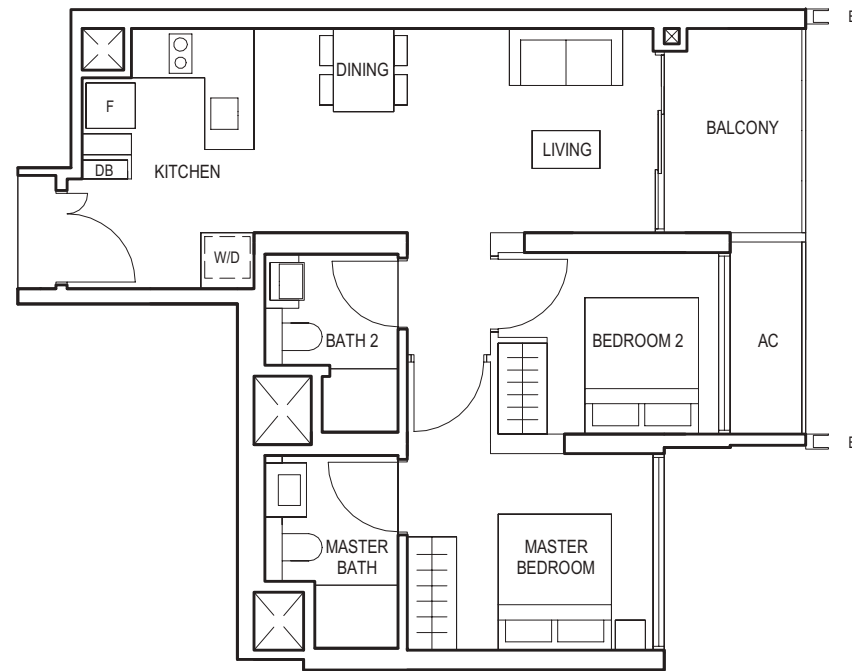
KEY PLAN

2-BEDROOM

TYPE (2P)a

#02-14 to #29-14

65 sq m



Applicable to unit
#25-14 to #29-14 only



FULL HEIGHT VERTICAL VISUAL SCREENS:
A - FIXED SCREEN
B - FIXED FIN

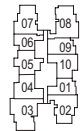
LEGEND:
F - FRIDGE DB - DISTRIBUTION BOARD WC - WATER CLOSET W/D - WASHER CUM DRYER W - WASHER D - DRYER AC - AIRCON LEDGE
PES - PRIVATE ENCLOSED SPACE

- VISUAL SCREENS ARE SUBJECT TO VISUAL CONTROL REQUIREMENT IMPOSED/APPROVED BY THE RELEVANT AUTHORITY.
- AREA INCLUDES AIRCON (AC) LEDGE, BALCONY AND PRIVATE ENCLOSED SPACE (PES).
- THE BALCONY/PRIVATE ENCLOSED SPACE (PES) SHALL NOT BE ENCLOSED UNLESS WITH THE APPROVED BALCONY/PES SCREEN. FOR AN ILLUSTRATION OF THE APPROVED BALCONY/PES SCREEN, PLEASE REFER TO THE DIAGRAM ANNEXED HERETO AS 'ANNEXURE 1'.

BLOCK 10



BLOCK 8



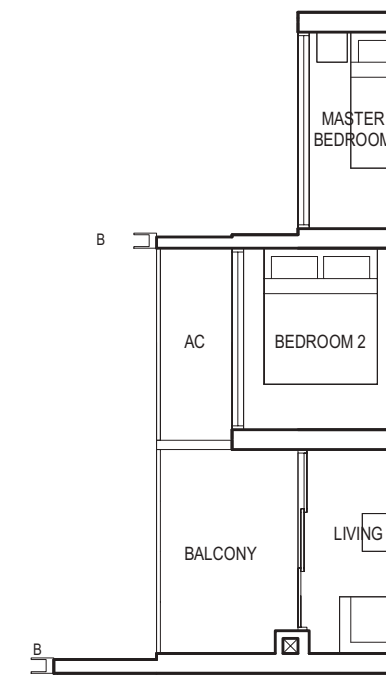
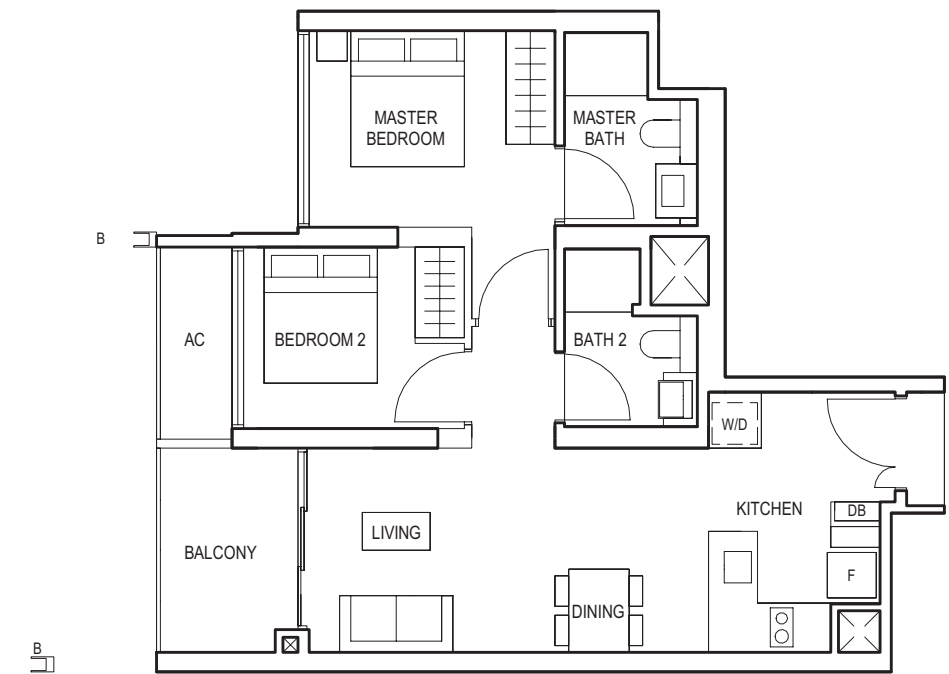
KEY PLAN

2-BEDROOM

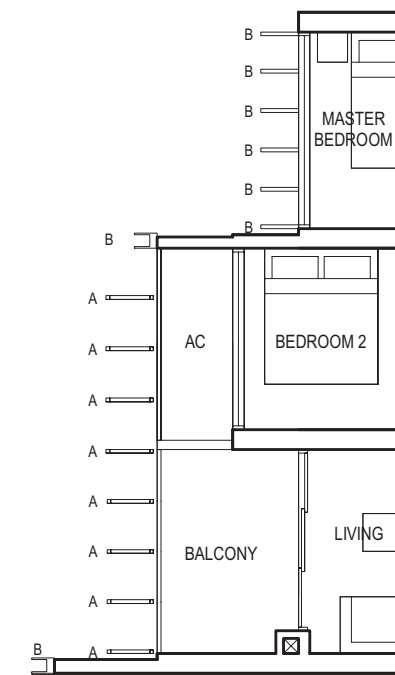
TYPE (2P)a

#02-04 to #29-04

65 sq m



Applicable to unit
#03-04 to #12-04 only



Applicable to unit
#13-04 to #29-04 only

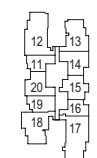


FULL HEIGHT VERTICAL VISUAL SCREENS:
A - FIXED SCREEN
B - FIXED FIN

LEGEND:
F - FRIDGE DB - DISTRIBUTION BOARD WC - WATER CLOSET W/D - WASHER CUM DRYER W - WASHER D - DRYER AC - AIRCON LEDGE
PES - PRIVATE ENCLOSED SPACE

- VISUAL SCREENS ARE SUBJECT TO VISUAL CONTROL REQUIREMENT IMPOSED/APPROVED BY THE RELEVANT AUTHORITY.
- AREA INCLUDES AIRCON (AC) LEDGE, BALCONY AND PRIVATE ENCLOSED SPACE (PES).
- THE BALCONY/PRIVATE ENCLOSED SPACE (PES) SHALL NOT BE ENCLOSED UNLESS WITH THE APPROVED BALCONY/PES SCREEN. FOR AN ILLUSTRATION OF THE APPROVED BALCONY/PES SCREEN, PLEASE REFER TO THE DIAGRAM ANNEXED HERETO AS 'ANNEXURE 1'.

BLOCK 10



BLOCK 8



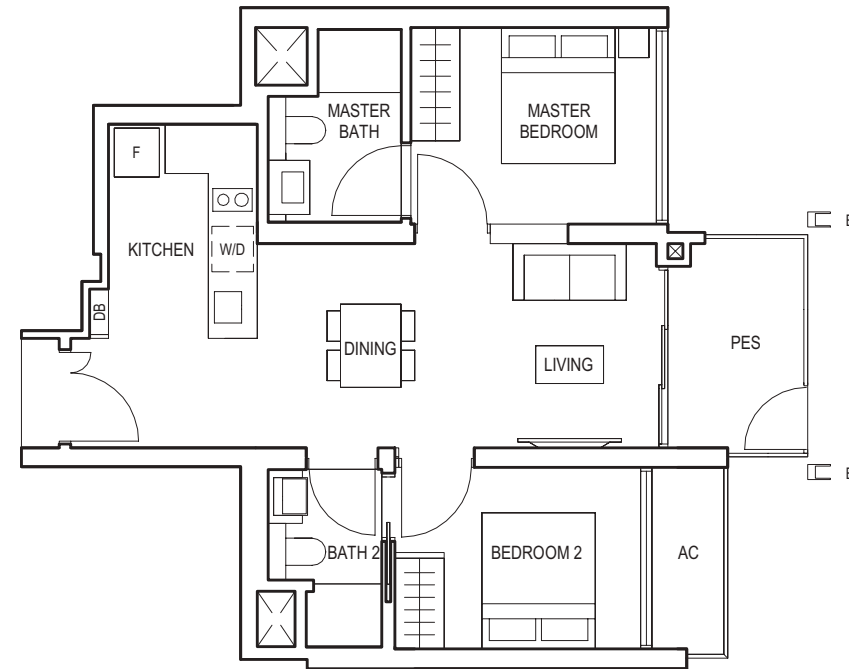
KEY PLAN

2-BEDROOM

TYPE (2P)b1

#01-15

64 sq m



FULL HEIGHT VERTICAL VISUAL SCREENS:
A - FIXED SCREEN
B - FIXED FIN

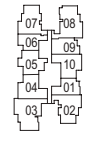
LEGEND:
F - FRIDGE DB - DISTRIBUTION BOARD WC - WATER CLOSET W/D - WASHER CUM DRYER W - WASHER D - DRYER AC - AIRCON LEDGE
PES - PRIVATE ENCLOSED SPACE

- * VISUAL SCREENS ARE SUBJECT TO VISUAL CONTROL REQUIREMENT IMPOSED/APPROVED BY THE RELEVANT AUTHORITY.
- * AREA INCLUDES AIRCON (AC) LEDGE, BALCONY AND PRIVATE ENCLOSED SPACE (PES).
- * THE BALCONY/PRIVATE ENCLOSED SPACE (PES) SHALL NOT BE ENCLOSED UNLESS WITH THE APPROVED BALCONY/PES SCREEN. FOR AN ILLUSTRATION OF THE APPROVED BALCONY/PES SCREEN, PLEASE REFER TO THE DIAGRAM ANNEXED HERETO AS 'ANNEXURE 1'.

BLOCK 10



BLOCK 8

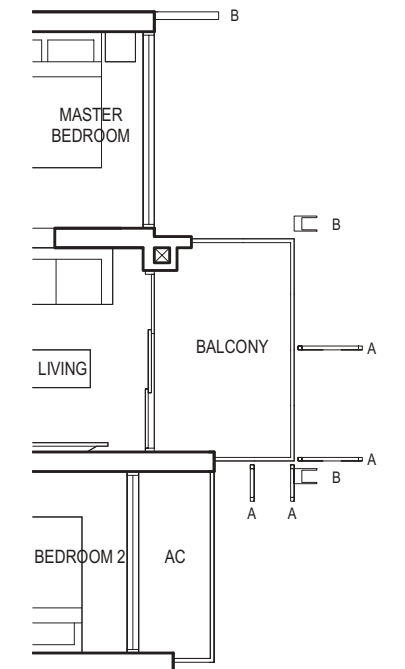
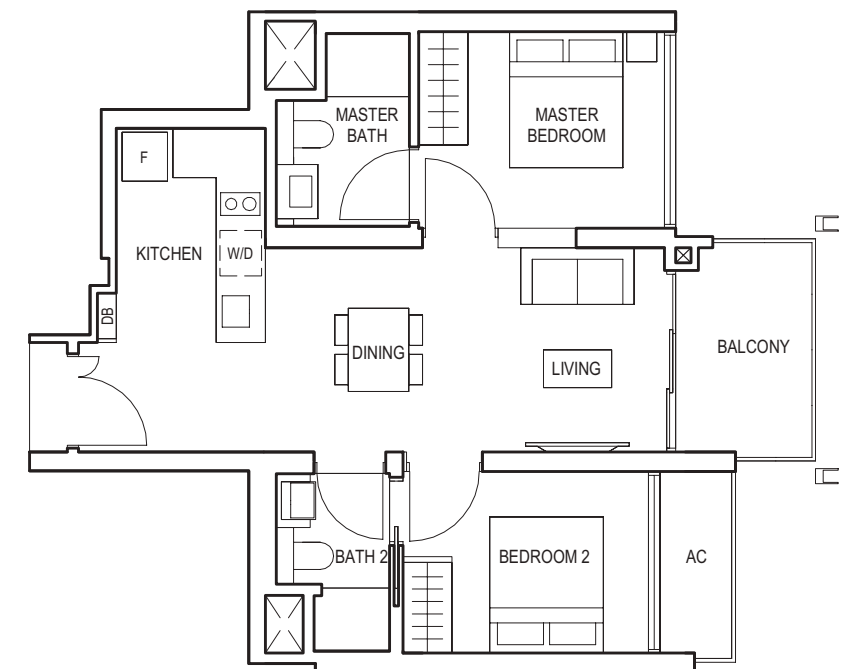


2-BEDROOM

TYPE (2P)b

#02-15 to #29-15

64 sq m



Applicable to unit
#25-15 to #29-15 only

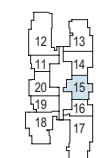


FULL HEIGHT VERTICAL VISUAL SCREENS:
A - FIXED SCREEN
B - FIXED FIN

LEGEND:
F - FRIDGE DB - DISTRIBUTION BOARD WC - WATER CLOSET W/D - WASHER CUM DRYER W - WASHER D - DRYER AC - AIRCON LEDGE
PES - PRIVATE ENCLOSED SPACE

- * VISUAL SCREENS ARE SUBJECT TO VISUAL CONTROL REQUIREMENT IMPOSED/APPROVED BY THE RELEVANT AUTHORITY.
- * AREA INCLUDES AIRCON (AC) LEDGE, BALCONY AND PRIVATE ENCLOSED SPACE (PES).
- * THE BALCONY/PRIVATE ENCLOSED SPACE (PES) SHALL NOT BE ENCLOSED UNLESS WITH THE APPROVED BALCONY/PES SCREEN. FOR AN ILLUSTRATION OF THE APPROVED BALCONY/PES SCREEN, PLEASE REFER TO THE DIAGRAM ANNEXED HERETO AS 'ANNEXURE 1'.

BLOCK 10



BLOCK 8

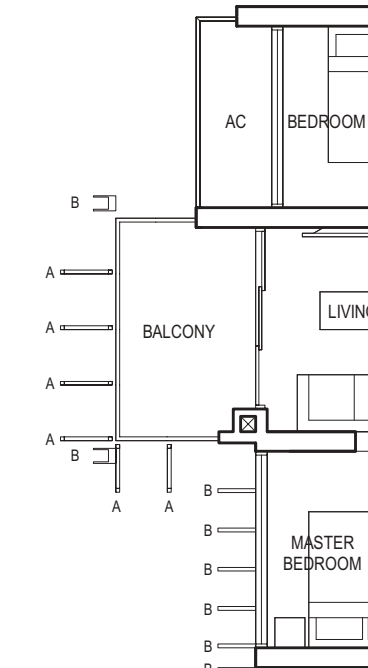
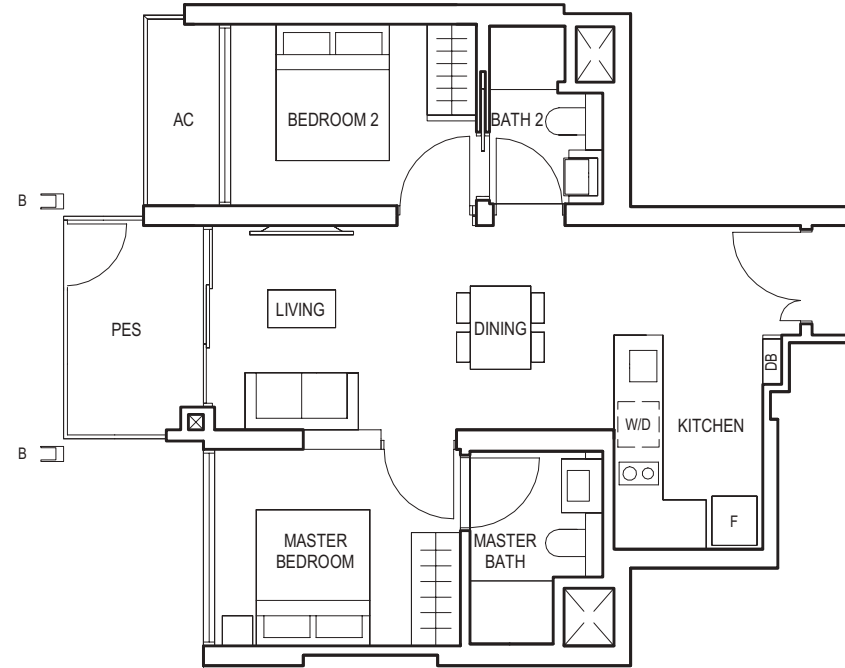


2-BEDROOM

TYPE (2P)b1

#01-05

64 sq m



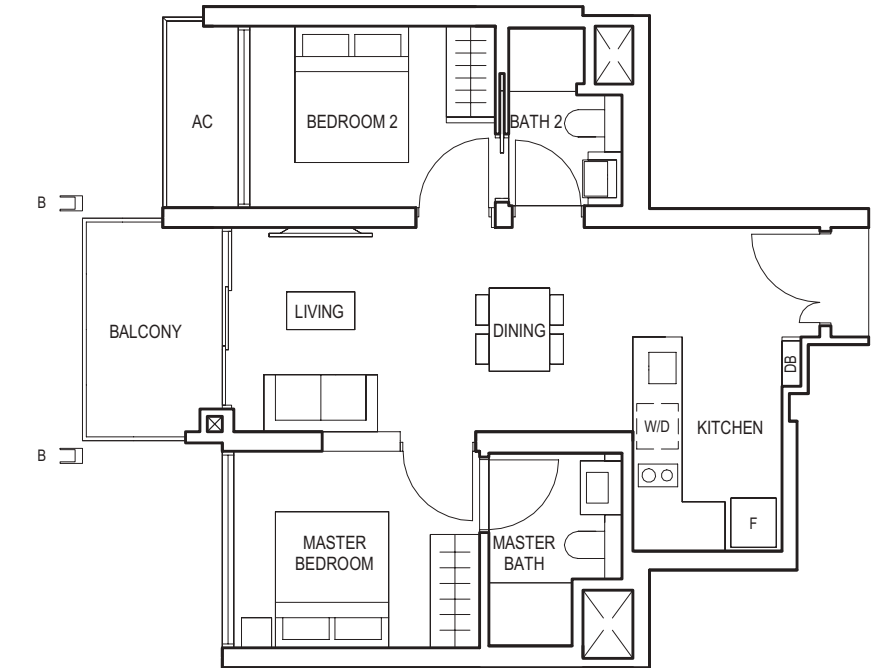
Applicable to unit
#13-05 to #29-05 only

2-BEDROOM

TYPE (2P)b

#02-05 to #29-05

64 sq m



FULL HEIGHT VERTICAL VISUAL SCREENS:
A - FIXED SCREEN
B - FIXED FIN

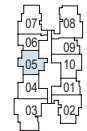
LEGEND:
F - FRIDGE DB - DISTRIBUTION BOARD WC - WATER CLOSET W/D - WASHER CUM DRYER W - WASHER D - DRYER AC - AIRCON LEDGE
PES - PRIVATE ENCLOSED SPACE

- VISUAL SCREENS ARE SUBJECT TO VISUAL CONTROL REQUIREMENT IMPOSED/APPROVED BY THE RELEVANT AUTHORITY.
- AREA INCLUDES AIRCON (AC) LEDGE, BALCONY AND PRIVATE ENCLOSED SPACE (PES).
- THE BALCONY/PRIVATE ENCLOSED SPACE (PES) SHALL NOT BE ENCLOSED UNLESS WITH THE APPROVED BALCONY/PES SCREEN. FOR AN ILLUSTRATION OF THE APPROVED BALCONY/PES SCREEN, PLEASE REFER TO THE DIAGRAM ANNEXED HERETO AS 'ANNEXURE 1'.

BLOCK 10



BLOCK 8



KEY PLAN

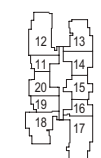


FULL HEIGHT VERTICAL VISUAL SCREENS:
A - FIXED SCREEN
B - FIXED FIN

LEGEND:
F - FRIDGE DB - DISTRIBUTION BOARD WC - WATER CLOSET W/D - WASHER CUM DRYER W - WASHER D - DRYER AC - AIRCON LEDGE
PES - PRIVATE ENCLOSED SPACE

- VISUAL SCREENS ARE SUBJECT TO VISUAL CONTROL REQUIREMENT IMPOSED/APPROVED BY THE RELEVANT AUTHORITY.
- AREA INCLUDES AIRCON (AC) LEDGE, BALCONY AND PRIVATE ENCLOSED SPACE (PES).
- THE BALCONY/PRIVATE ENCLOSED SPACE (PES) SHALL NOT BE ENCLOSED UNLESS WITH THE APPROVED BALCONY/PES SCREEN. FOR AN ILLUSTRATION OF THE APPROVED BALCONY/PES SCREEN, PLEASE REFER TO THE DIAGRAM ANNEXED HERETO AS 'ANNEXURE 1'.

BLOCK 10



BLOCK 8



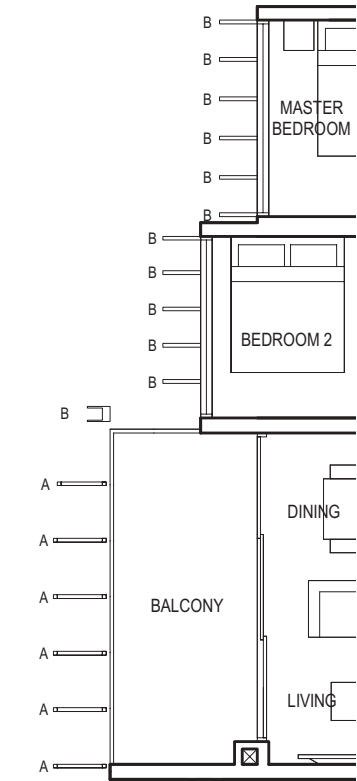
KEY PLAN

2-BEDROOM (with Study)

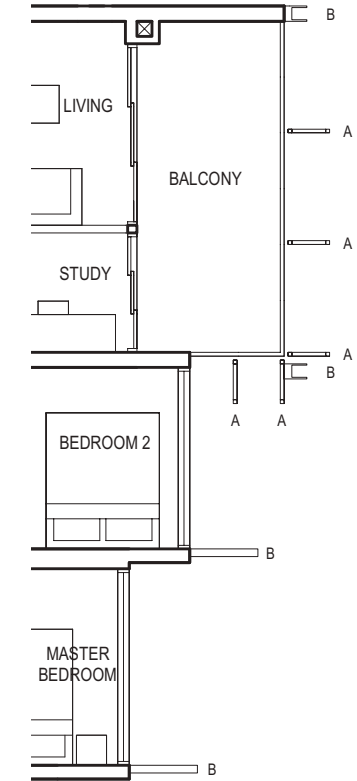
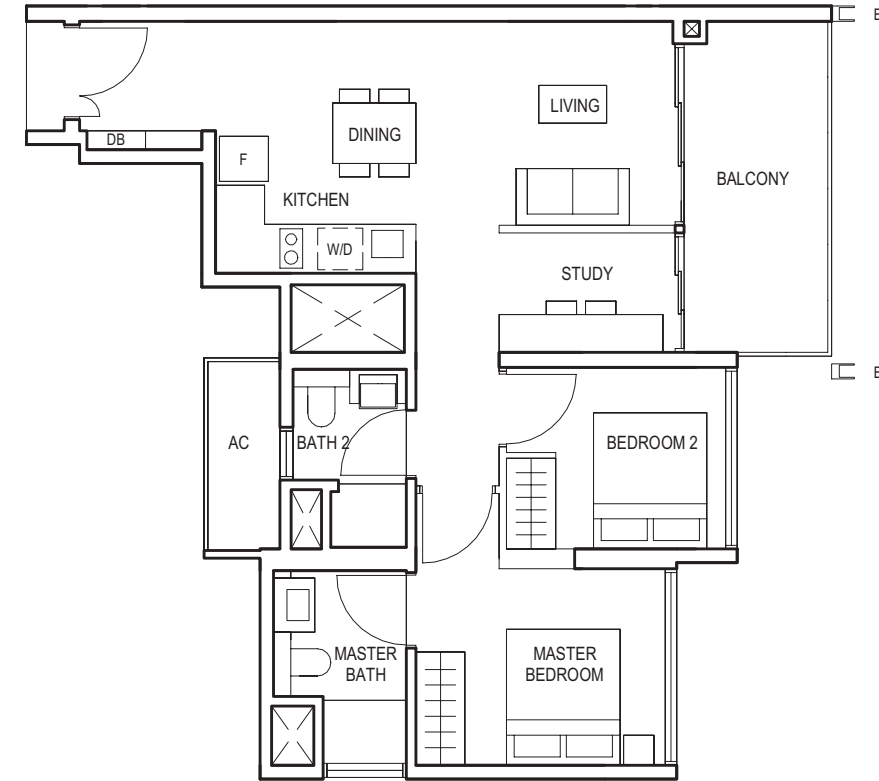
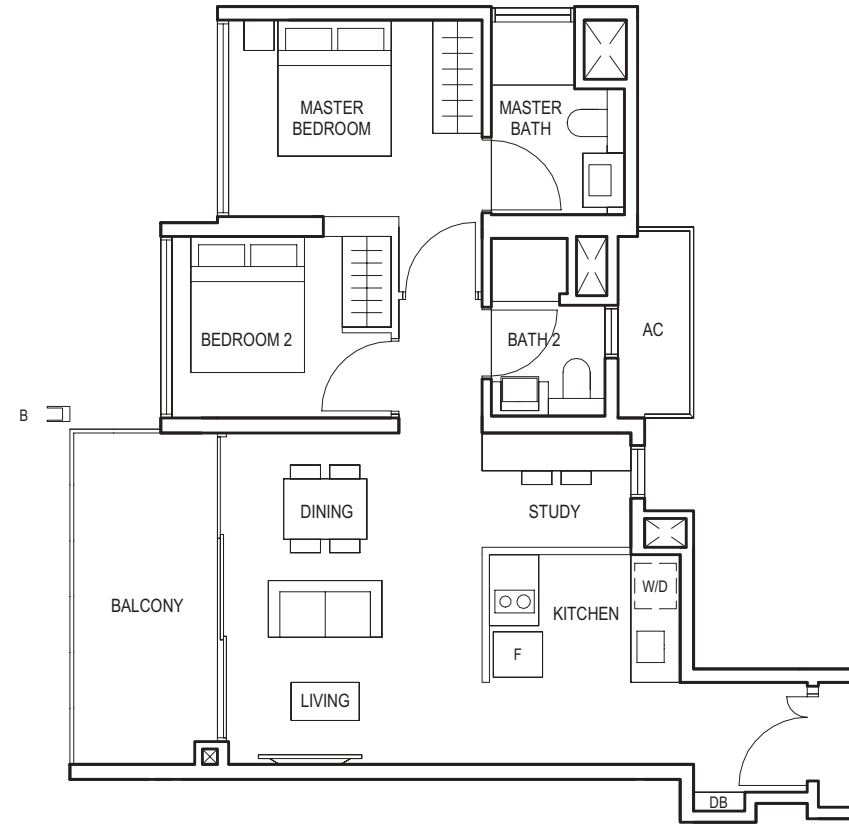
TYPE (2+1)a
#03-07 to #29-07
73 sq m

2-BEDROOM (with Study)

TYPE (2+1)b
#03-02 to #29-02
72 sq m



Applicable to unit
#13-07 to #29-07 only



Applicable to unit
#25-02 to #29-02 only



FULL HEIGHT VERTICAL VISUAL SCREENS:
A - FIXED SCREEN
B - FIXED FIN

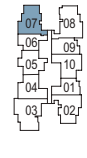
LEGEND:
F - FRIDGE DB - DISTRIBUTION BOARD WC - WATER CLOSET W/D - WASHER CUM DRYER W - WASHER D - DRYER AC - AIRCON LEDGE
PES - PRIVATE ENCLOSED SPACE

- * VISUAL SCREENS ARE SUBJECT TO VISUAL CONTROL REQUIREMENT IMPOSED/APPROVED BY THE RELEVANT AUTHORITY.
- * AREA INCLUDES AIRCON (AC) LEDGE, BALCONY AND PRIVATE ENCLOSED SPACE (PES).
- * THE BALCONY/PRIVATE ENCLOSED SPACE (PES) SHALL NOT BE ENCLOSED UNLESS WITH THE APPROVED BALCONY/PES SCREEN. FOR AN ILLUSTRATION OF THE APPROVED BALCONY/PES SCREEN, PLEASE REFER TO THE DIAGRAM ANNEXED HERETO AS 'ANNEXURE 1'.

BLOCK 10



BLOCK 8



KEY PLAN

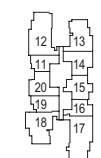


FULL HEIGHT VERTICAL VISUAL SCREENS:
A - FIXED SCREEN
B - FIXED FIN

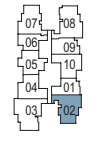
LEGEND:
F - FRIDGE DB - DISTRIBUTION BOARD WC - WATER CLOSET W/D - WASHER CUM DRYER W - WASHER D - DRYER AC - AIRCON LEDGE
PES - PRIVATE ENCLOSED SPACE

- * VISUAL SCREENS ARE SUBJECT TO VISUAL CONTROL REQUIREMENT IMPOSED/APPROVED BY THE RELEVANT AUTHORITY.
- * AREA INCLUDES AIRCON (AC) LEDGE, BALCONY AND PRIVATE ENCLOSED SPACE (PES).
- * THE BALCONY/PRIVATE ENCLOSED SPACE (PES) SHALL NOT BE ENCLOSED UNLESS WITH THE APPROVED BALCONY/PES SCREEN. FOR AN ILLUSTRATION OF THE APPROVED BALCONY/PES SCREEN, PLEASE REFER TO THE DIAGRAM ANNEXED HERETO AS 'ANNEXURE 1'.

BLOCK 10



BLOCK 8



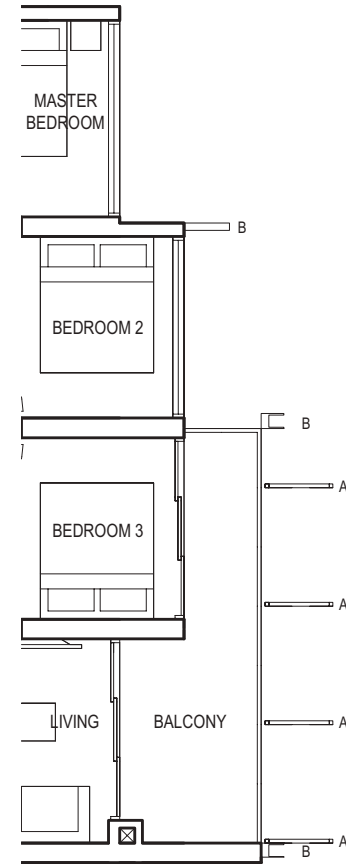
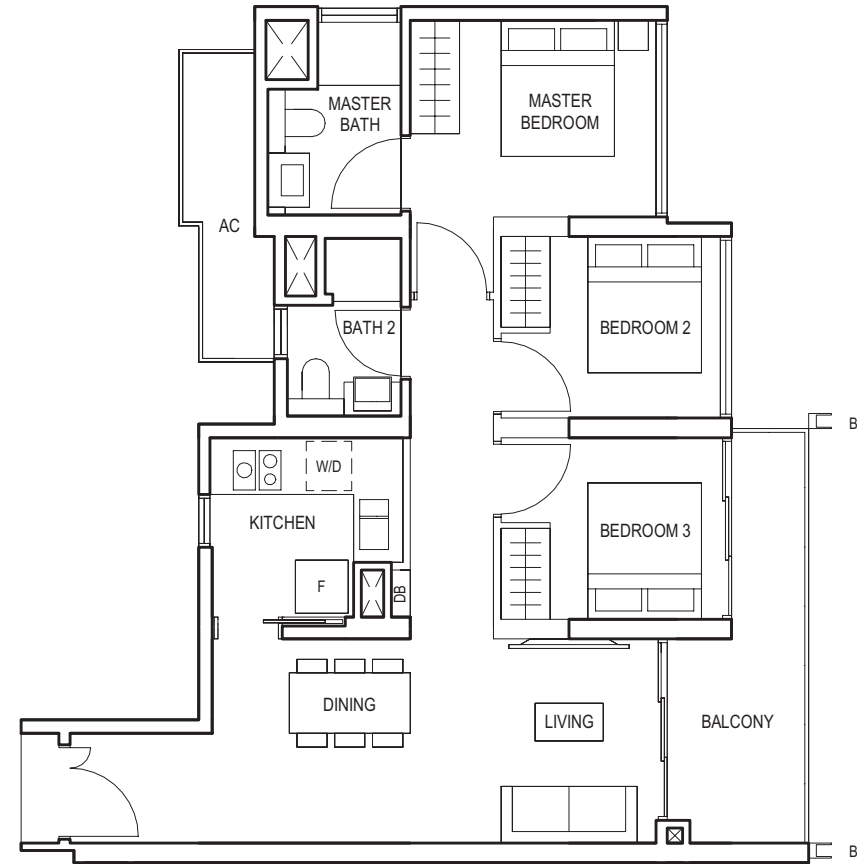
KEY PLAN

3-BEDROOM

TYPE (3)a

#03-13 to #29-13

83 sq m



Applicable to unit
#25-13 to #29-13 only

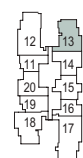


FULL HEIGHT VERTICAL VISUAL SCREENS:
A - FIXED SCREEN
B - FIXED FIN

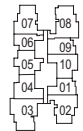
LEGEND:
F - FRIDGE DB - DISTRIBUTION BOARD WC - WATER CLOSET W/D - WASHER CUM DRYER W - WASHER D - DRYER AC - AIRCON LEDGE
PES - PRIVATE ENCLOSED SPACE

- VISUAL SCREENS ARE SUBJECT TO VISUAL CONTROL REQUIREMENT IMPOSED/APPROVED BY THE RELEVANT AUTHORITY.
- AREA INCLUDES AIRCON (AC) LEDGE, BALCONY AND PRIVATE ENCLOSED SPACE (PES).
- THE BALCONY/PRIVATE ENCLOSED SPACE (PES) SHALL NOT BE ENCLOSED UNLESS WITH THE APPROVED BALCONY/PES SCREEN. FOR AN ILLUSTRATION OF THE APPROVED BALCONY/PES SCREEN, PLEASE REFER TO THE DIAGRAM ANNEXED HERETO AS 'ANNEXURE 1'.

BLOCK 10



BLOCK 8



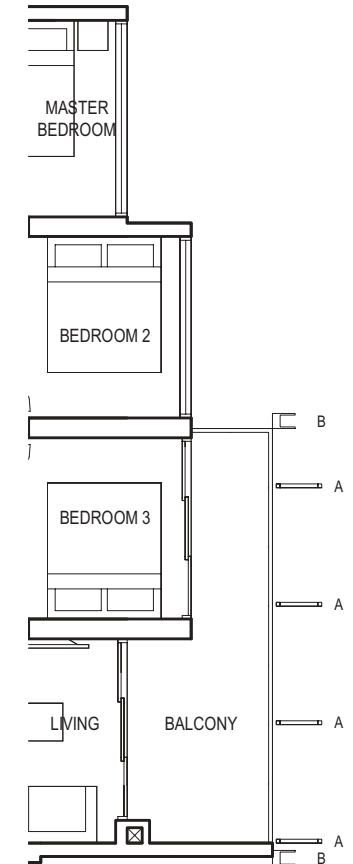
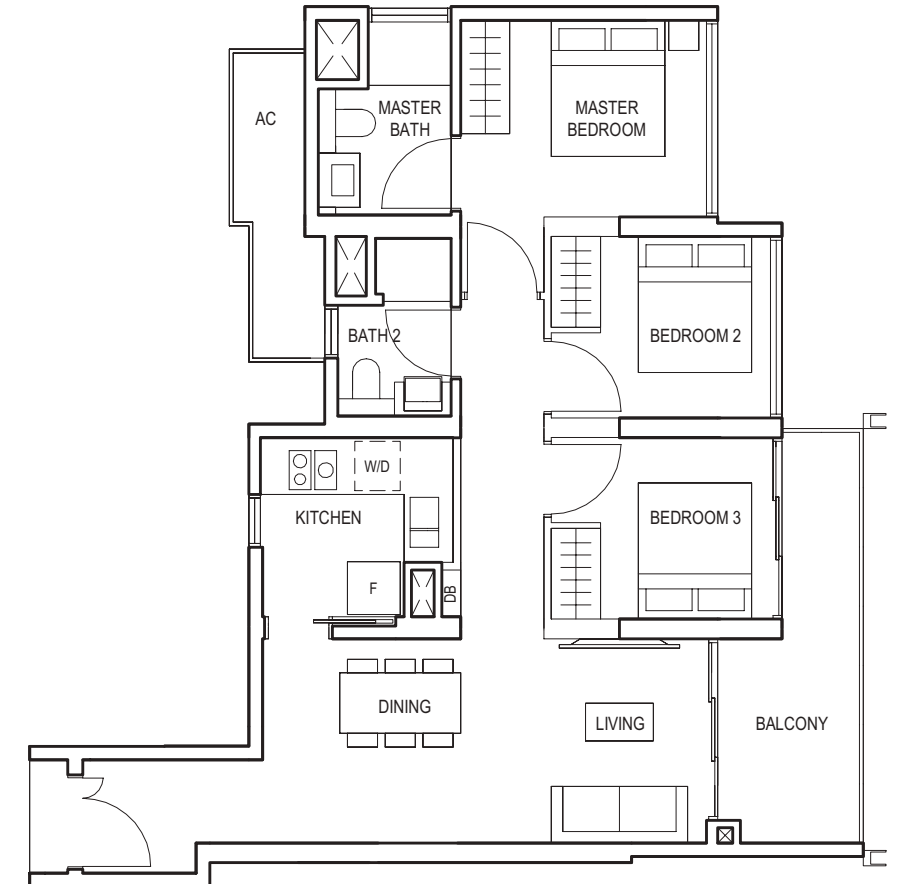
KEY PLAN

3-BEDROOM

TYPE (3)b

#03-08 to #29-08

84 sq m



Applicable to unit
#25-08 to #29-08 only

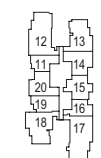


FULL HEIGHT VERTICAL VISUAL SCREENS:
A - FIXED SCREEN
B - FIXED FIN

LEGEND:
F - FRIDGE DB - DISTRIBUTION BOARD WC - WATER CLOSET W/D - WASHER CUM DRYER W - WASHER D - DRYER AC - AIRCON LEDGE
PES - PRIVATE ENCLOSED SPACE

- VISUAL SCREENS ARE SUBJECT TO VISUAL CONTROL REQUIREMENT IMPOSED/APPROVED BY THE RELEVANT AUTHORITY.
- AREA INCLUDES AIRCON (AC) LEDGE, BALCONY AND PRIVATE ENCLOSED SPACE (PES).
- THE BALCONY/PRIVATE ENCLOSED SPACE (PES) SHALL NOT BE ENCLOSED UNLESS WITH THE APPROVED BALCONY/PES SCREEN. FOR AN ILLUSTRATION OF THE APPROVED BALCONY/PES SCREEN, PLEASE REFER TO THE DIAGRAM ANNEXED HERETO AS 'ANNEXURE 1'.

BLOCK 10



BLOCK 8



KEY PLAN

3-BEDROOM (with Yard)

TYPE (3Y)a1

#01-18

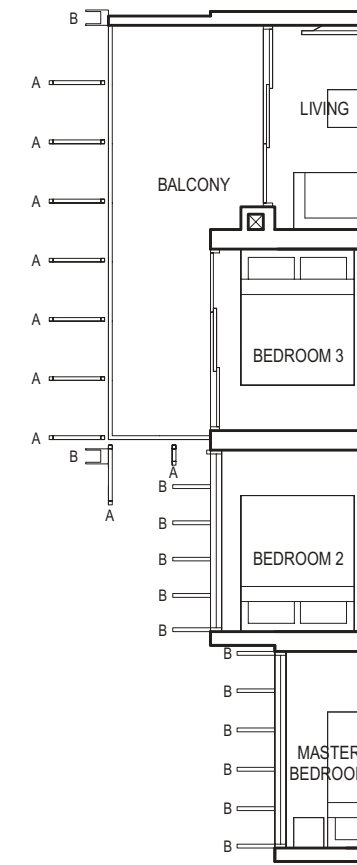
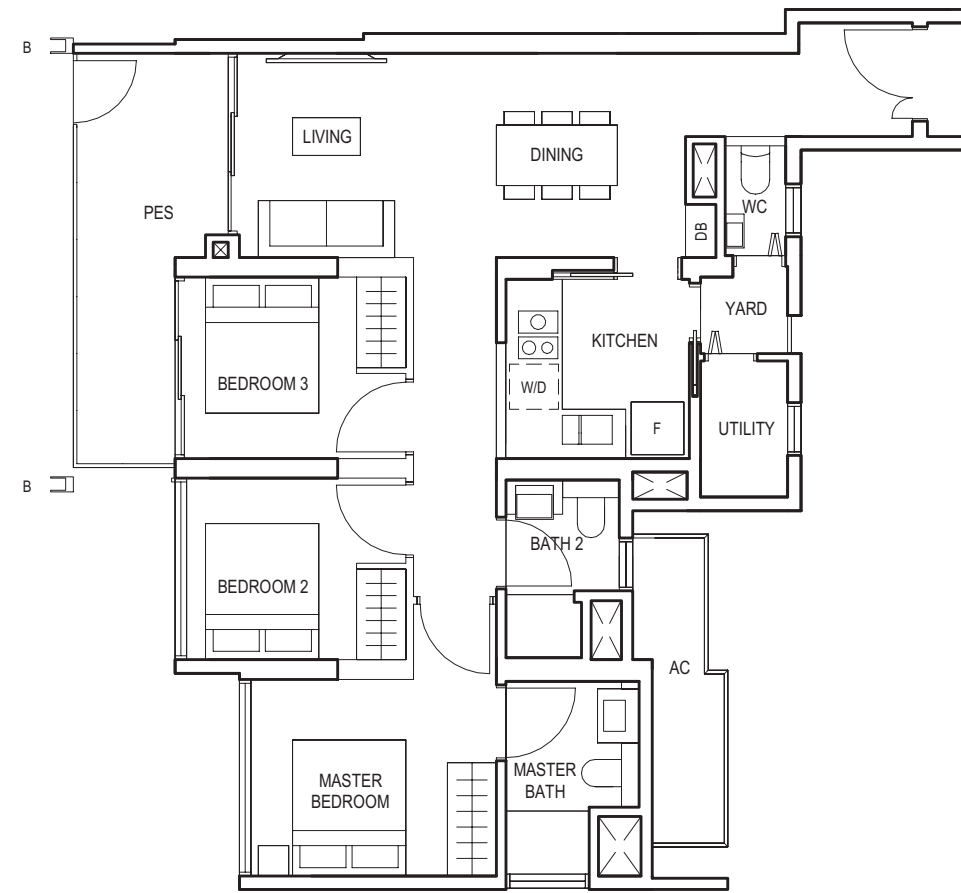
92 sq m

3-BEDROOM (with Yard)

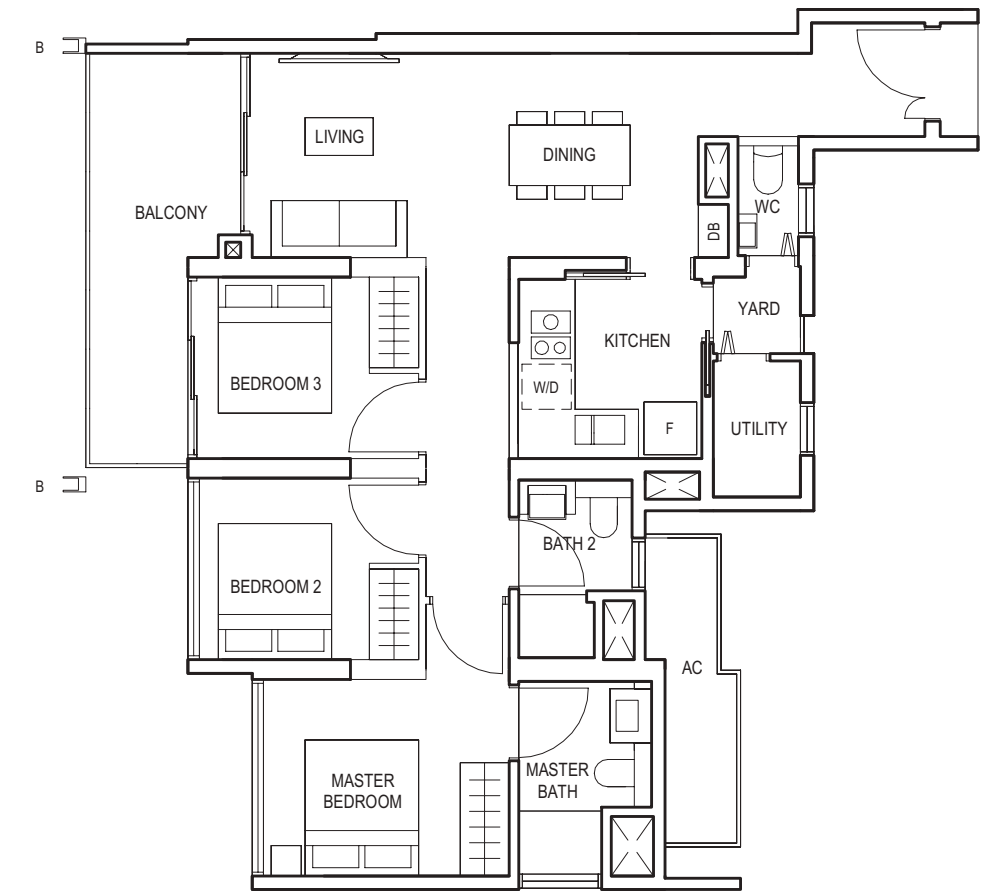
TYPE (3Y)a

#02-18 to #29-18

92 sq m



Applicable to unit
#13-18 to #29-18 only

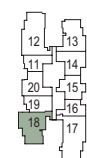


FULL HEIGHT VERTICAL VISUAL SCREENS:
A - FIXED SCREEN
B - FIXED FIN

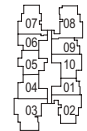
LEGEND:
F - FRIDGE DB - DISTRIBUTION BOARD WC - WATER CLOSET W/D - WASHER CUM DRYER W - WASHER D - DRYER AC - AIRCON LEDGE
PES - PRIVATE ENCLOSED SPACE

- * VISUAL SCREENS ARE SUBJECT TO VISUAL CONTROL REQUIREMENT IMPOSED/APPROVED BY THE RELEVANT AUTHORITY.
- * AREA INCLUDES AIRCON (AC) LEDGE, BALCONY AND PRIVATE ENCLOSED SPACE (PES).
- * THE BALCONY/PRIVATE ENCLOSED SPACE (PES) SHALL NOT BE ENCLOSED UNLESS WITH THE APPROVED BALCONY/PES SCREEN. FOR AN ILLUSTRATION OF THE APPROVED BALCONY/PES SCREEN, PLEASE REFER TO THE DIAGRAM ANNEXED HERETO AS 'ANNEXURE 1'.

BLOCK 10



BLOCK 8



KEY PLAN

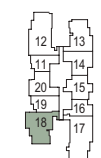


FULL HEIGHT VERTICAL VISUAL SCREENS:
A - FIXED SCREEN
B - FIXED FIN

LEGEND:
F - FRIDGE DB - DISTRIBUTION BOARD WC - WATER CLOSET W/D - WASHER CUM DRYER W - WASHER D - DRYER AC - AIRCON LEDGE
PES - PRIVATE ENCLOSED SPACE

- * VISUAL SCREENS ARE SUBJECT TO VISUAL CONTROL REQUIREMENT IMPOSED/APPROVED BY THE RELEVANT AUTHORITY.
- * AREA INCLUDES AIRCON (AC) LEDGE, BALCONY AND PRIVATE ENCLOSED SPACE (PES).
- * THE BALCONY/PRIVATE ENCLOSED SPACE (PES) SHALL NOT BE ENCLOSED UNLESS WITH THE APPROVED BALCONY/PES SCREEN. FOR AN ILLUSTRATION OF THE APPROVED BALCONY/PES SCREEN, PLEASE REFER TO THE DIAGRAM ANNEXED HERETO AS 'ANNEXURE 1'.

BLOCK 10



BLOCK 8



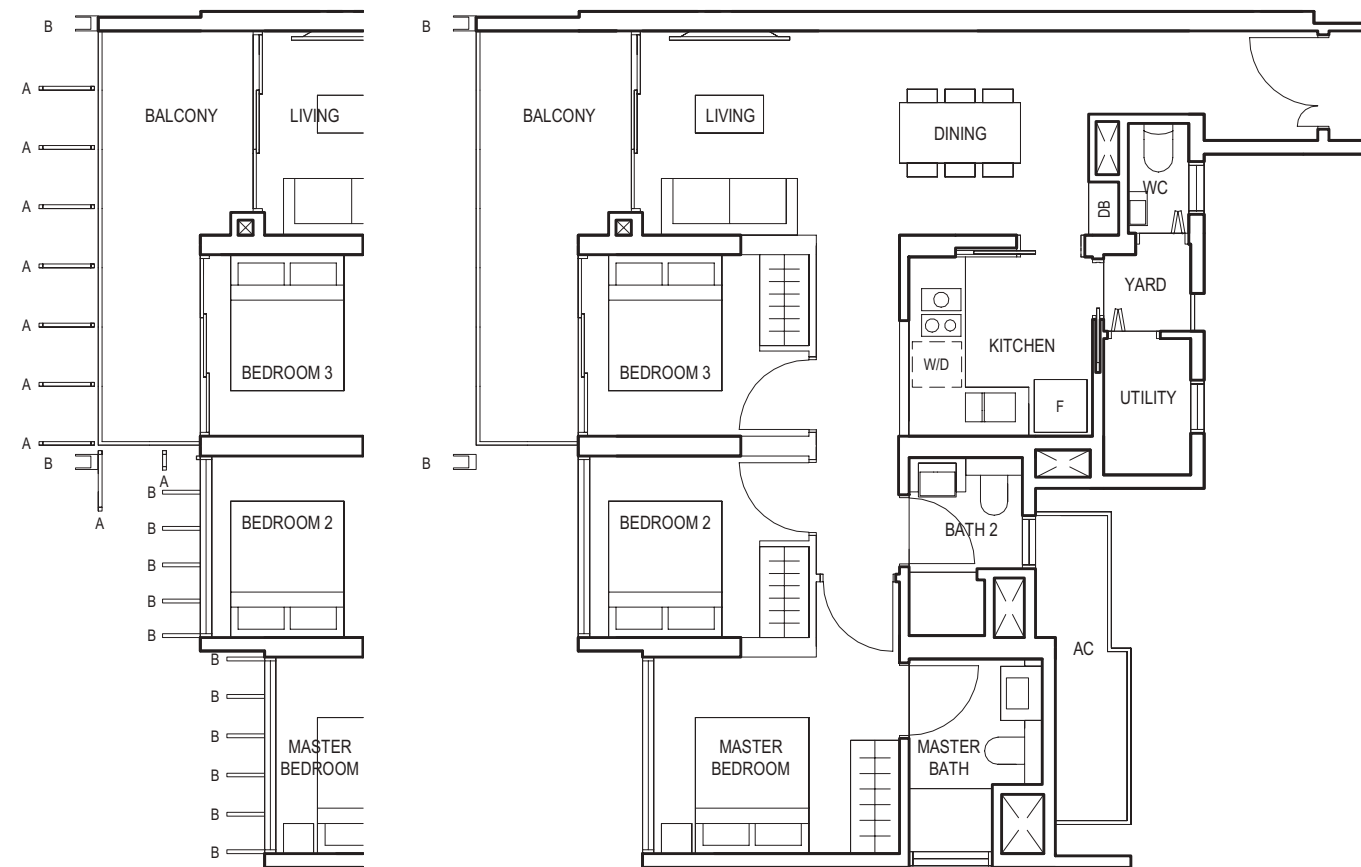
KEY PLAN

3-BEDROOM (with Yard)

TYPE (3Y)b

#03-03 to #29-03

92 sq m



Applicable to unit
#13-03 to #29-03 only



FULL HEIGHT VERTICAL VISUAL SCREENS:
A - FIXED SCREEN
B - FIXED FIN

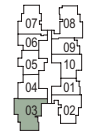
LEGEND:
F - FRIDGE DB - DISTRIBUTION BOARD WC - WATER CLOSET W/D - WASHER CUM DRYER W - WASHER D - DRYER AC - AIRCON LEDGE
PES - PRIVATE ENCLOSED SPACE

- * VISUAL SCREENS ARE SUBJECT TO VISUAL CONTROL REQUIREMENT IMPOSED/APPROVED BY THE RELEVANT AUTHORITY.
- * AREA INCLUDES AIRCON (AC) LEDGE, BALCONY AND PRIVATE ENCLOSED SPACE (PES).
- * THE BALCONY/PRIVATE ENCLOSED SPACE (PES) SHALL NOT BE ENCLOSED UNLESS WITH THE APPROVED BALCONY/PES SCREEN. FOR AN ILLUSTRATION OF THE APPROVED BALCONY/PES SCREEN, PLEASE REFER TO THE DIAGRAM ANNEXED HERETO AS 'ANNEXURE 1'.

BLOCK 10



BLOCK 8



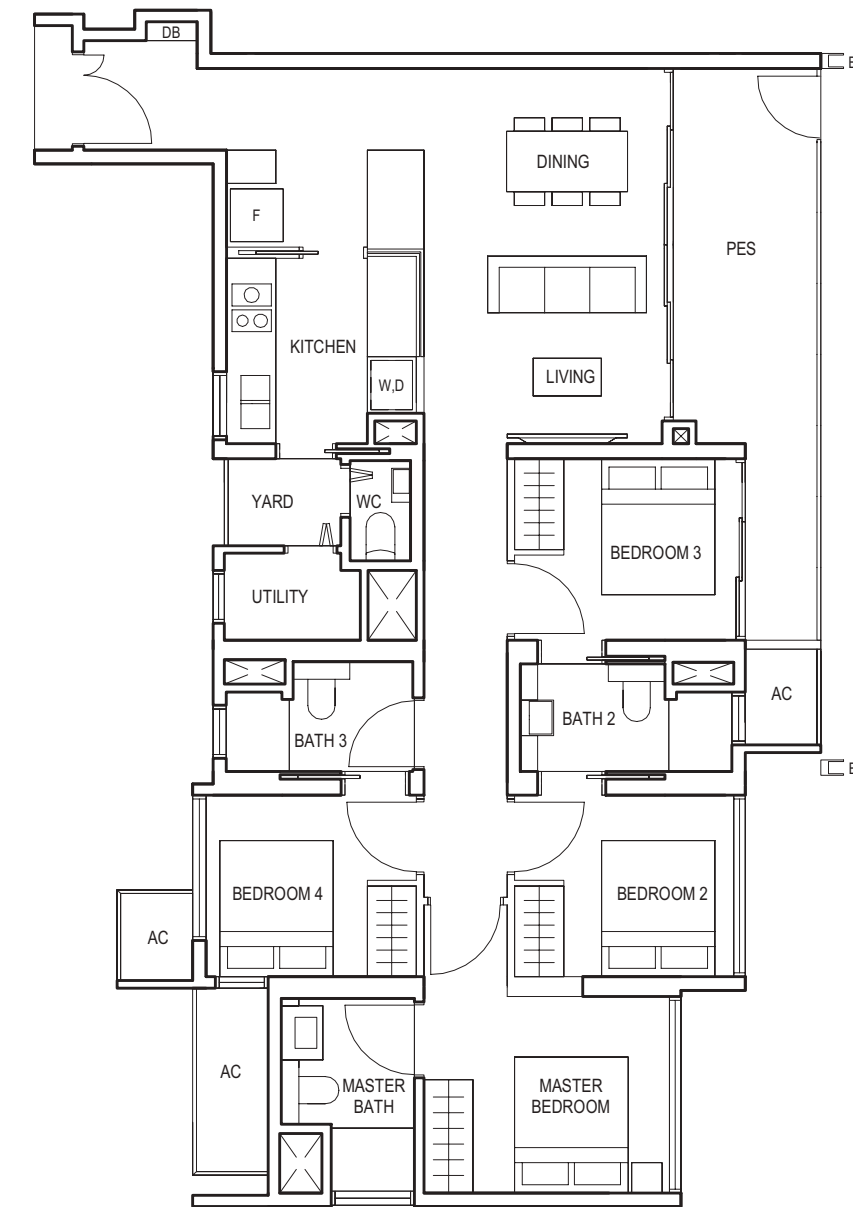
KEY PLAN

4-BEDROOM

TYPE (4)a1

#01-17

116 sq m

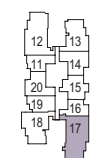


FULL HEIGHT VERTICAL VISUAL SCREENS:
A - FIXED SCREEN
B - FIXED FIN

LEGEND:
F - FRIDGE DB - DISTRIBUTION BOARD WC - WATER CLOSET W/D - WASHER CUM DRYER W - WASHER D - DRYER AC - AIRCON LEDGE
PES - PRIVATE ENCLOSED SPACE

- * VISUAL SCREENS ARE SUBJECT TO VISUAL CONTROL REQUIREMENT IMPOSED/APPROVED BY THE RELEVANT AUTHORITY.
- * AREA INCLUDES AIRCON (AC) LEDGE, BALCONY AND PRIVATE ENCLOSED SPACE (PES).
- * THE BALCONY/PRIVATE ENCLOSED SPACE (PES) SHALL NOT BE ENCLOSED UNLESS WITH THE APPROVED BALCONY/PES SCREEN. FOR AN ILLUSTRATION OF THE APPROVED BALCONY/PES SCREEN, PLEASE REFER TO THE DIAGRAM ANNEXED HERETO AS 'ANNEXURE 1'.

BLOCK 10



BLOCK 8

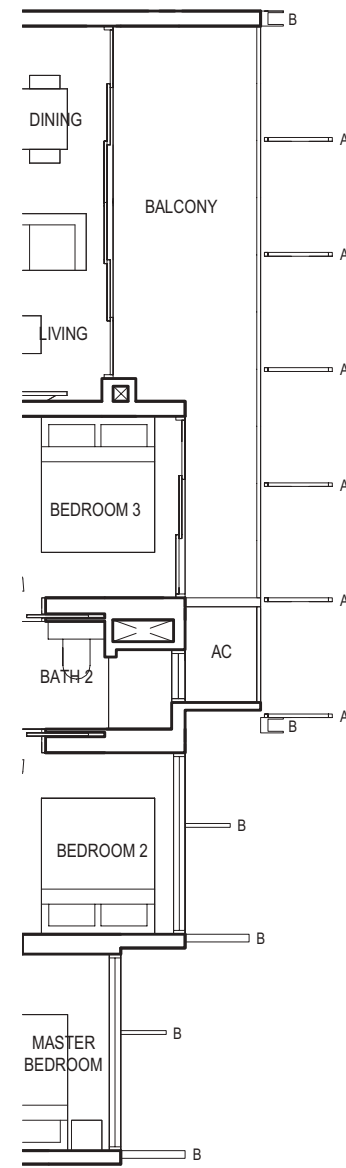
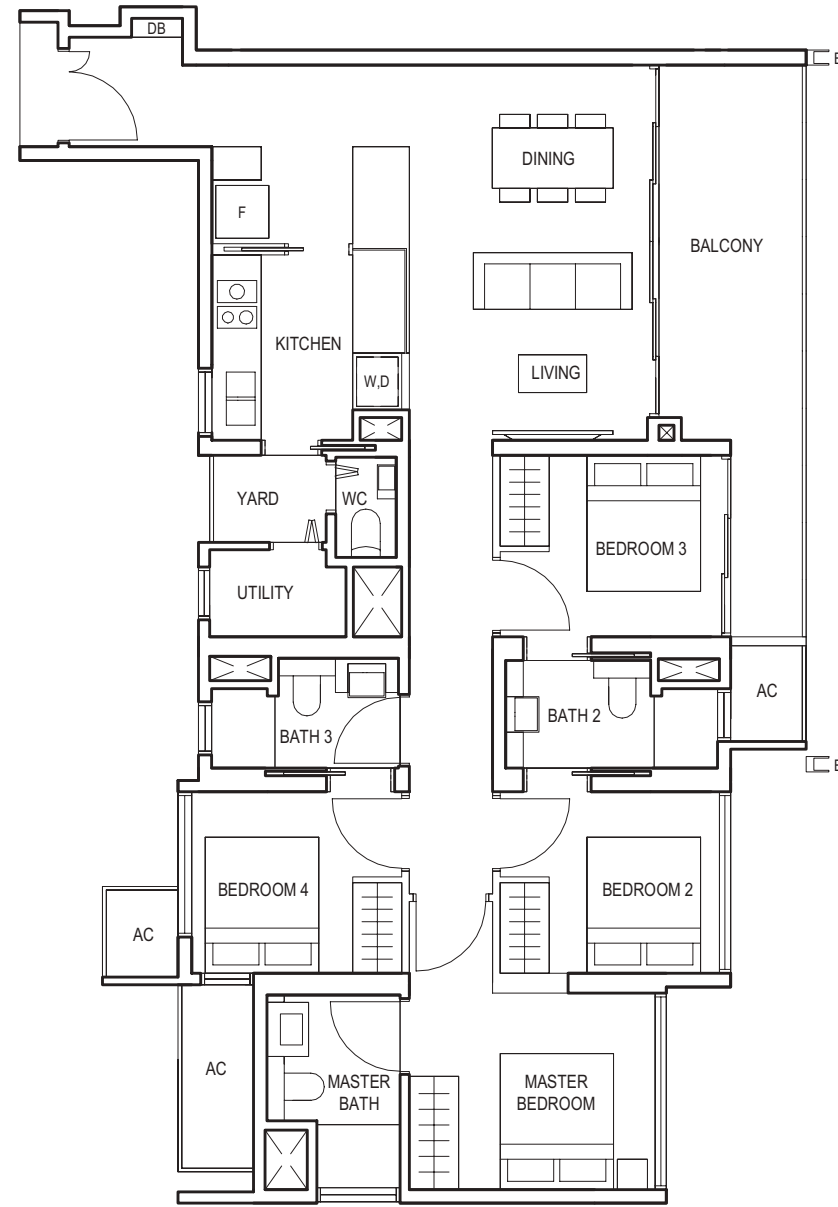


KEY PLAN

4-BEDROOM

TYPE (4)a

#02-17 to #29-17
116 sq m



Applicable to unit
#25-17 to #29-17 only

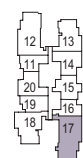


FULL HEIGHT VERTICAL VISUAL SCREENS:
A - FIXED SCREEN
B - FIXED FIN

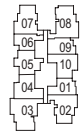
LEGEND:
F - FRIDGE DB - DISTRIBUTION BOARD WC - WATER CLOSET W/D - WASHER CUM DRYER W - WASHER D - DRYER AC - AIRCON LEDGE
PES - PRIVATE ENCLOSED SPACE

* VISUAL SCREENS ARE SUBJECT TO VISUAL CONTROL REQUIREMENT IMPOSED/APPROVED BY THE RELEVANT AUTHORITY.
* AREA INCLUDES AIRCON (AC) LEDGE, BALCONY AND PRIVATE ENCLOSED SPACE (PES).
* THE BALCONY/PRIVATE ENCLOSED SPACE (PES) SHALL NOT BE ENCLOSED UNLESS WITH THE APPROVED BALCONY/PES SCREEN. FOR AN ILLUSTRATION OF THE APPROVED BALCONY/PES SCREEN, PLEASE REFER TO THE DIAGRAM ANNEXED HERETO AS 'ANNEXURE 1'.

BLOCK 10



BLOCK 8

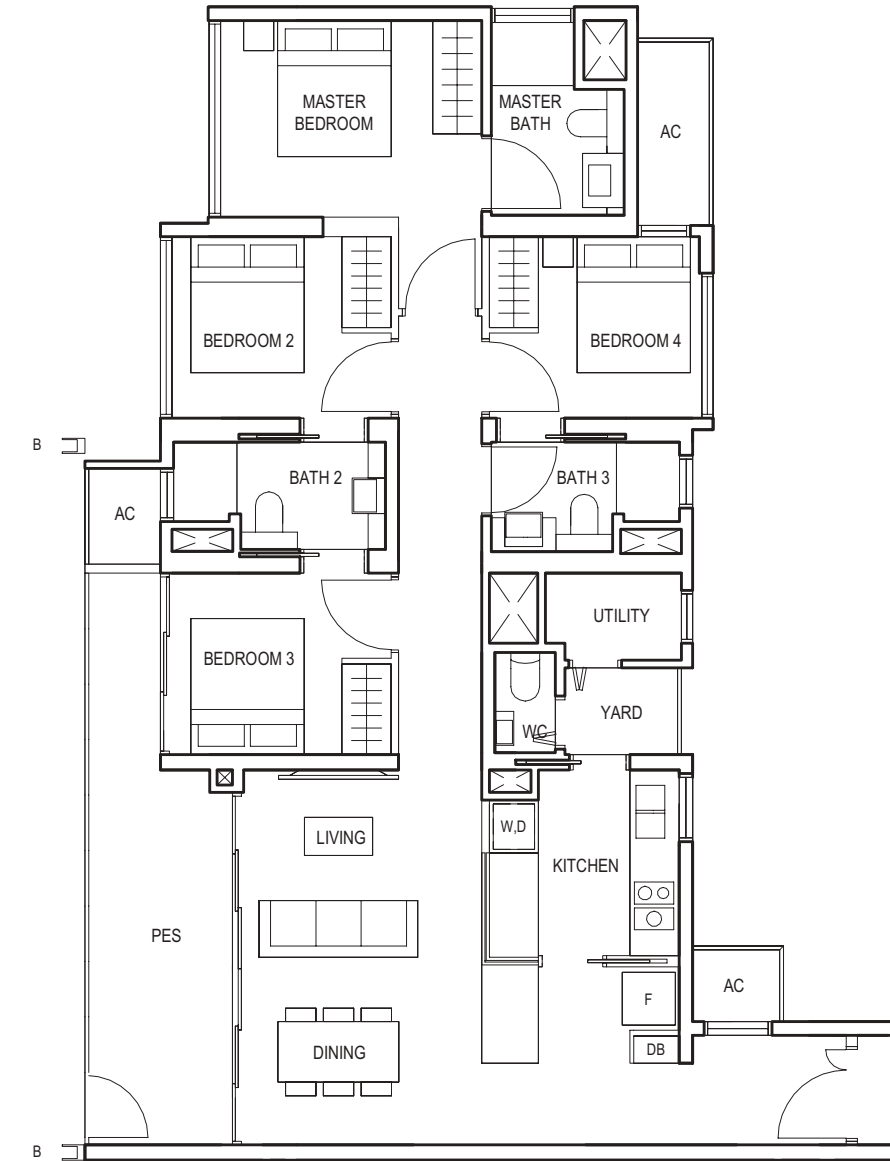


KEY PLAN

4-BEDROOM

TYPE (4)b1

#01-12
117 sq m

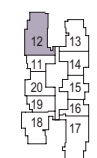


FULL HEIGHT VERTICAL VISUAL SCREENS:
A - FIXED SCREEN
B - FIXED FIN

LEGEND:
F - FRIDGE DB - DISTRIBUTION BOARD WC - WATER CLOSET W/D - WASHER CUM DRYER W - WASHER D - DRYER AC - AIRCON LEDGE
PES - PRIVATE ENCLOSED SPACE

* VISUAL SCREENS ARE SUBJECT TO VISUAL CONTROL REQUIREMENT IMPOSED/APPROVED BY THE RELEVANT AUTHORITY.
* AREA INCLUDES AIRCON (AC) LEDGE, BALCONY AND PRIVATE ENCLOSED SPACE (PES).
* THE BALCONY/PRIVATE ENCLOSED SPACE (PES) SHALL NOT BE ENCLOSED UNLESS WITH THE APPROVED BALCONY/PES SCREEN. FOR AN ILLUSTRATION OF THE APPROVED BALCONY/PES SCREEN, PLEASE REFER TO THE DIAGRAM ANNEXED HERETO AS 'ANNEXURE 1'.

BLOCK 10



BLOCK 8



KEY PLAN

4-BEDROOM

TYPE (4)b

#02-12 to #29-12

117 sq m

ANNEXURE 1

APPROVED SCREEN FOR BALCONY AND PRIVATE ENCLOSED SPACE (PES)



Applicable to unit #13-12 to #29-12 only

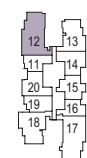


FULL HEIGHT VERTICAL VISUAL SCREENS:
A - FIXED SCREEN
B - FIXED FIN

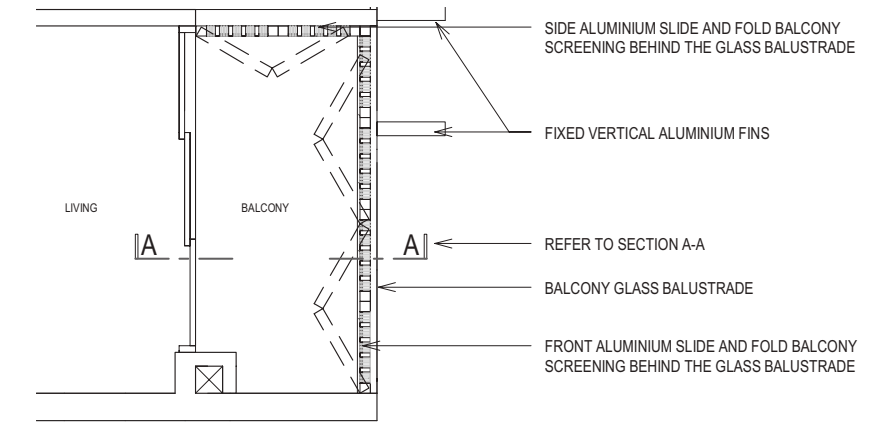
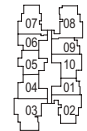
LEGEND:
F - FRIDGE DB - DISTRIBUTION BOARD WC - WATER CLOSET W/D - WASHER CUM DRYER W - WASHER D - DRYER AC - AIRCON LEDGE
PES - PRIVATE ENCLOSED SPACE

* VISUAL SCREENS ARE SUBJECT TO VISUAL CONTROL REQUIREMENT IMPOSED/APPROVED BY THE RELEVANT AUTHORITY.
* AREA INCLUDES AIRCON (AC) LEDGE, BALCONY AND PRIVATE ENCLOSED SPACE (PES).
* THE BALCONY/PRIVATE ENCLOSED SPACE (PES) SHALL NOT BE ENCLOSED UNLESS WITH THE APPROVED BALCONY/PES SCREEN. FOR AN ILLUSTRATION OF THE APPROVED BALCONY/PES SCREEN, PLEASE REFER TO THE DIAGRAM ANNEXED HERETO AS 'ANNEXURE 1'.

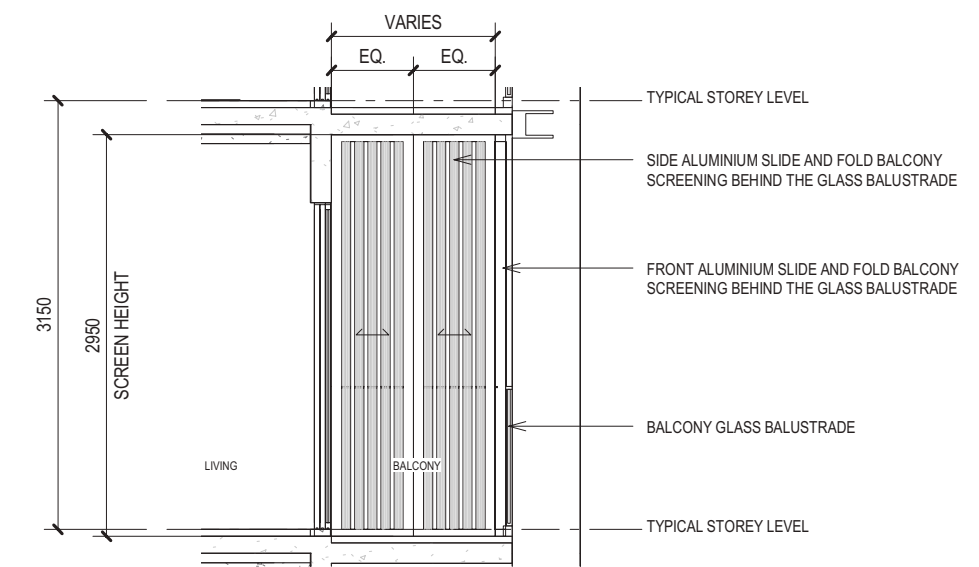
BLOCK 10



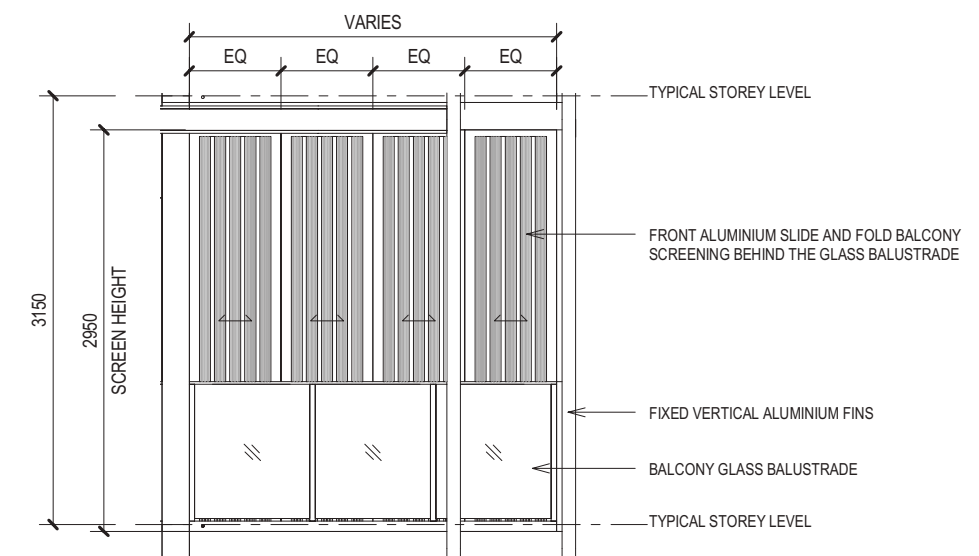
BLOCK 8



BALCONY/PES SCREEN - PLAN



BALCONY/PES SCREEN - SECTION A-A (Internal View)



BALCONY/PES SCREEN - FRONT ELEVATION (External View)

NOTES:

1. THE BALCONY / PES SHALL NOT BE ENCLOSED UNLESS WITH THE APPROVED SCREEN AS SHOWN ABOVE ("APPROVED SCREEN");
2. BALCONY / PES SCREEN IS NOT PROVIDED. THE COST OF SCREEN AND INSTALLATION OF THE APPROVED SCREEN SHALL BE BORNE BY THE PURCHASER; AND
3. ON-SITE VERIFICATION IS NECESSARY TO OBTAIN ACTUAL MEASUREMENTS PRIOR TO FABRICATION AND INSTALLATION OF THE APPROVED SCREEN.

EQ - EQUIDISTANT

A Home into The Future

Live easy and smart. Making the most out of technology is part of Midwood's design philosophy. All units have provisions for connectivity to an advanced smart home system.



BUILT-IN SYSTEM

Gain control of these home safety, comfort and functionality features via a mobile app[#].



SMART GATEWAY

Standalone hub to access and control Z-Wave compatible smart devices in your home via a mobile app[#]



DIGITAL LOCKSET

Unlock your main door using PIN / Key or via a mobile app[#]



SMART AIR CON CONTROL

Control, check and set the temperature in the Living/Dining and Master Bedroom via a mobile app[#]

FUTURE EXPANSION

Potential future expansion by user, utilising the compatible Z-Wave technology[#].



SMART AIR CONDITIONING

Additional remote access to other bedrooms



HOME SECURITY CAMERA

Efficient monitoring of home environment



SMART POWER PLUG

Touch-free control of wall sockets for safer usage and energy savings



SMART LIGHTING CONTROL

Set the mood or switch off lights when not in use



SMART HOME APPLIANCES

Fuss-free control of digital-enabled devices and machines



SMART CURTAINS & BLINDS CONTROL

Wake up or roll down smart-wired window shades

USER FRIENDLY PROVISION

Know which parking lots are available in the multi-storey car park with the assistance of the parking sensor and light indicator system (Car Park System).



CAR PARK SYSTEM

MAKING DREAM HOMES A REALITY

Hong Leong Holdings Limited (HLHL) was established in 1968 as the privately-held property development and investment arm of the Hong Leong Group. As one of the pioneers of the real estate scene in Singapore, HLHL has since emerged as a major player in the property market. As a forward-looking developer that continues to pursue improvement and expansion while maintaining its high design, customer service and sustainability standards, HLHL takes pride in being responsible for some of the most distinctive and iconic residential developments in Singapore.



One Balmoral



The Tate Residences



Sage



The Meyerise



Aalto

[#] Compatible smartphone/tablet, internet connection and Wi-Fi system required, to be provided separately by user.

SALES ENQUIRIES 6220 9911

WWW.MIDWOOD.COM.SG

A Joint Venture Between



**HONG LEONG
HOLDINGS LIMITED**

豐隆實業有限公司
(UEN.196800290Z)

Hong Realty (Private) Limited

(UEN. 196200244W)

Developer: Hillview Rise Development Pte. Ltd. (UEN. 201826026W) • Developer's Licence No.: C1338 • Tenure of Land: Leasehold (99 years lease commencing from 1 October 2018) • Encumbrances: Mortgage IF/461947P in favour of DBS Bank Ltd. • Date of Notice of Vacant Possession under the Sale and Purchase Agreement: No later than 1 September 2024 • Expected Date of Legal Completion: No later than 1 September 2027 or 3 years after the Date of Delivery of Vacant Possession, whichever is the earlier • Location & Lot No.: Lot MK10-5079K at 8 & 10 Hillview Rise

While every reasonable care has been taken in preparing this brochure, the developer cannot be held responsible for any inaccuracies. All statements are believed to be correct but are not to be regarded as statement or representation of facts. Visual representations, illustrations, photographs and renderings are intended to portray only impressions of the development. All information and specifications are current at the time of press and are subject to change as may be required and cannot form part of an offer or contract.

MIDWOOD

WHERE INSPIRATION MEETS TRANQUILITY